

Product Catalogue



PRO AUDIO



PRO LIGHTING



Improved performance. trusted brand. innovative technology. quality. no. 1 pro lighting brand. no. 1 pro audio brand. improved design.

Improved performance. trusted brand. innovative technology. quality. no. 1 pro lighting brand. no. 1 pro audio brand. improved design.

45+

Years Of Excellence

**INDIA'S LEADING
PRO AUDIO & DJ LIGHTNING
COMPANY**



WHO WE ARE?

Atipro Technologies is a leading company in pro audio and lighting R&D. We believe "Premium Technology should be affordable," so we design top-quality products across multiple brands for the masses. Collaborating with global R&D teams, we develop cost-effective solutions tailored for the Indian market.

“**ATipro is a REVOLUTION, whatever ATipro do is an INNOVATION**”



**AUTHORIZED SERVICE CENTER
GUJARAT**



DELHI EXPO 2023



GUJARAT EXHIBITION 2023



MUMBAI EXPO 2023

ADVANCEMENT IS THE WAY TO ACHIEVEMENT

In 1982 Atipro Technologies started with 2 speaker models in India but today it's one of the most Innovative Company in Professional Audio and Lighting Industry. The Company is responsible for bringing many trends in India which other companies follow. We have many brands under the Atipro Technologies umbrella like Atipro Audio, Atipro Light, Yogipro, Audioflix & Glabs.



Mr. Rakesh Jain
Director

At **Atipro Technologies**, our leadership drives our innovation and growth. **Mr. Rakesh Jain's** extensive industry experience and visionary guidance have been pivotal in our success. His deep understanding of the audio and lighting industry, commitment to quality, and strategic insights have established Atipro Technologies as a trusted brand, inspiring our team to



Mr. Gaurav Jain
Director

Mr. Gaurav Jain's expertise in business development and market strategy has driven our expansion and success. His focus on operational excellence and strong client relationships keeps Atipro Technologies competitive.

Under his leadership, we deliver top-quality products at competitive prices, meeting customer needs. His vision and guidance propel our mission to lead in the professional audio and lighting industry.



First Company To Bring Innovative Technologies & Focus on Original Design Concepts



India's Fastest Growing Company in Last 5 Years



ranker.com has placed **ATipro Technologies** among top 100 brand in the segment



10,00,000+ Satisfied Customers

ATIPRO (AUDIO)	-05
TECHNOLOGY TREE	-06
NEO SERIES	-07
FERRITE SERIES	-12
TITANIUM SERIES	-20
CEILING FANS/ SPEAKERS	-22
NEO/ FERRITE DRIVER UNIT	-23
PRESSURE MID	-25
CROSSOVER/ NETWORK PLATE	-26
DJ BELTS	-26
PLATINUM NETWORKS	-27
DIAPHRAGM/ RECONE KIT	-28
DJ AMPLIFIERS	-29
PA SERIES AMPLIFIERS	-46
EQUALIZER/ CROSSOVERS	-53
WIRED/ WIRELESS MICS & STANDS	-55
PIN & CONNECTORS	-57
SOUND PROCESSORS	-57
LINE ARRAY	-59
LOADED CABINETS	-61
EMPTY CABINETS	-62
DJ & LIVE MIXERS	-64
SPEAKER PARTS & MATERIALS	-69
ATIPRO (LIGHTING)	-70
TECHNOLOGY SUN	-71
LED PAR LIGHTS	-72
SHARPEE LIGHTS	-73
BLINDER	-75
LASERS	-77
SMOKE MACHINES	-80
LED FOLLOW	-83
CONTROLLERS	-85
YOGIPRO	-87
FERRITE/ NEO SERIES	-88
DRIVER UNITS	-93
NETWORK PLATES	-94
PA AMPLIFIERS	-94
AUDIOFLIX	-95
FERRITE/ NEO SERIES	-96
HF DRIVERS	-98
NETWORK PLATES	-98
G-LABS	-99
FERRITE/ NEO SERIES	-100
SPEAKERS	-102
ATIPRO FAMILY	-104
DEALER NETWORK	-106

CONSUMER ELECTRONICS BRANDS

silicon **india**

BUSINESS OF SERVICES

SILICONINDIA.COM

Ati-Pro

recognized by **siliconindia** Magazine as

siliconindia TOP 10
CONSUMER
ELECTRONICS BRANDS -2022

*Through this Award, we acknowledge and applaud the institute's myriad courses & programs,
and their ingenuity to leverage the best practices in presenting unique
methodologies to address learning outcomes*



Emmanuel Christi Das
Managing Editor



ATIPRO TECHNOLOGIES IN MEDIA

ANI

South Asia's Leading Multimedial News Agency



Gaurav Jain, CEO, ATI Pro Technologies

Renowned pro audio & lighting technology company 'ATI Pro Technologies' eyes aggressive expansion plans for 2023

indiasilicon

Ati-Pro

Taking Audio and Lighting Products To Next Level

jective is to give the best value for money to our customer and build a long-term relationship with them," states Gaurav Jain, CEO of Ati-Pro. The CEO credits the Ati-Pro's success to its highly motivated team of employees and management who has worked round the clock to achieve the company goals and vision.

Ever since its inception, Ati-Pro has been perfecting its approach to create and deliver one of the most advanced audio and lighting systems in the market. Apart from several years of experience and knowledge in the space, the company also has a strong Technical Team and latest Design & Development Capability. They also have a state-of-the-

LOKMAT TIMES

Business News | Renowned Pro Audio & Lighting Technology Company 'ATI Pro Technologies' Eyes Aggressive Expansion Plans for 2023

Get latest articles and stories on Business at LatestLY. Incepted in 2013, leading pro audio & lighting brand 'ATI Pro' is set to expand its horizons with an upcoming corporate in the heart of New Delhi. With a vision to be a one-stop solution for technologically advanced products, ATI Pro's upcoming showroom will consist of various divisions under one roof. Spread across an area of 60000 sq. ft; the corporate space will incorporate an elaborate showroom, exclusive demo rooms, an exports & imports department, a dedicated service centre, a logistics division and many more. Moreover ATI Pro audio is now ATI Pro technologies we created many brands like yogipro and audiofix in order to cater to mass customer according to their budget with medium quality. Products with the ATI Pro brand will be supreme brand in terms of quality and latest technological trends.

dailyhunt

Renowned pro audio & lighting technology company 'ATI Pro Technologies' eyes aggressive expansion plans for 2023

ANI PR 6 April, 2023 02:13 pm IST



Gaurav Jain, CEO, ATI Pro Technologies

New Delhi [India], April 6 (ANI/SRV): Incepted in 2013, leading pro audio & lighting brand 'ATI Pro' is set to expand its horizons with an upcoming corporate in the heart of New Delhi. With a vision to be a one-stop solution for technologically advanced products, ATI Pro's upcoming showroom will consist of various divisions under one roof. Spread across an area of 60000 sq. ft; the corporate space will incorporate an elaborate showroom, exclusive demo rooms, an exports & imports department, a dedicated service centre, a logistics division and many more. Moreover ATI Pro audio is now ATI Pro technologies we created many brands like yogipro and audiofix in order to cater to mass customer according to their budget with medium quality.

Text Size: A- A+

Most Popular
Glittering GDP, high poverty: The paradox of Karnataka's unequal growth

ThePrint

Renowned pro audio & lighting technology company 'ATI Pro Technologies' eyes aggressive expansion plans for 2023

32d



New Delhi [India], April 6 (ANI/SRV): Incepted in 2013, leading pro audio & lighting brand 'ATI Pro' is set to expand its horizons with an upcoming corporate in the heart of New Delhi. With a vision to be a one-stop solution for technologically advanced products, ATI Pro's upcoming showroom will consist of various divisions under one roof. Spread across an area of

LATESTLY

Renowned pro audio & lighting technology company 'ATI Pro Technologies' eyes aggressive expansion plans for 2023

By ANI | Published: April 6, 2023 01:55 PM

New Delhi [India], April 6 (/SRV): Incepted in 2013, leading pro audio & lighting brand 'ATI Pro' is set ...

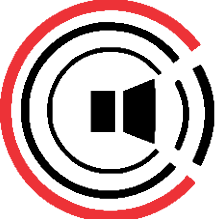
New Delhi [India], April 6 (/SRV): Incepted in 2013, leading pro audio & lighting brand 'ATI Pro' is set to expand its horizons with an upcoming corporate in the heart of New Delhi. With a vision to be a one-stop solution for technologically advanced products, ATI Pro's upcoming showroom will consist of various divisions under one roof. Spread across an area of 60000 sq. ft; the corporate space will incorporate an elaborate showroom, exclusive demo rooms, an exports & imports department, a dedicated service centre, a logistics division and many more. Moreover ATI Pro audio is now ATI Pro technologies we created many brands like yogipro and audiofix in order to cater to mass customer according to their budget with medium quality. Products with the ATI Pro brand will be supreme brand in terms of quality and latest technological trends.

Renowned pro audio & lighting technology company 'ATI Pro Technologies' eyes aggressive expansion plans for 2023

New Delhi [India], April 6 (ANI/SRV): Incepted in 2013, leading pro audio & lighting brand 'ATI Pro' is set to expand its horizons with an upcoming corporate in the heart of New Delhi. With a vision to be a one-stop solution for technologically advanced products, ATI Pro's upcoming showroom will consist of various divisions under one roof. Spread across an area of 60000 sq. ft; the corporate space will incorporate an elaborate showroom, exclusive demo rooms, an exports & imports department, a dedicated service centre, a logistics division and many more. Moreover ATI Pro audio is now ATI Pro technologies we created many brands like yogipro and audiofix in order to cater to mass customer according to their budget with medium quality. Products with the ATI Pro brand will be supreme brand in terms of quality and latest technological trends.





ATI  **pro**®

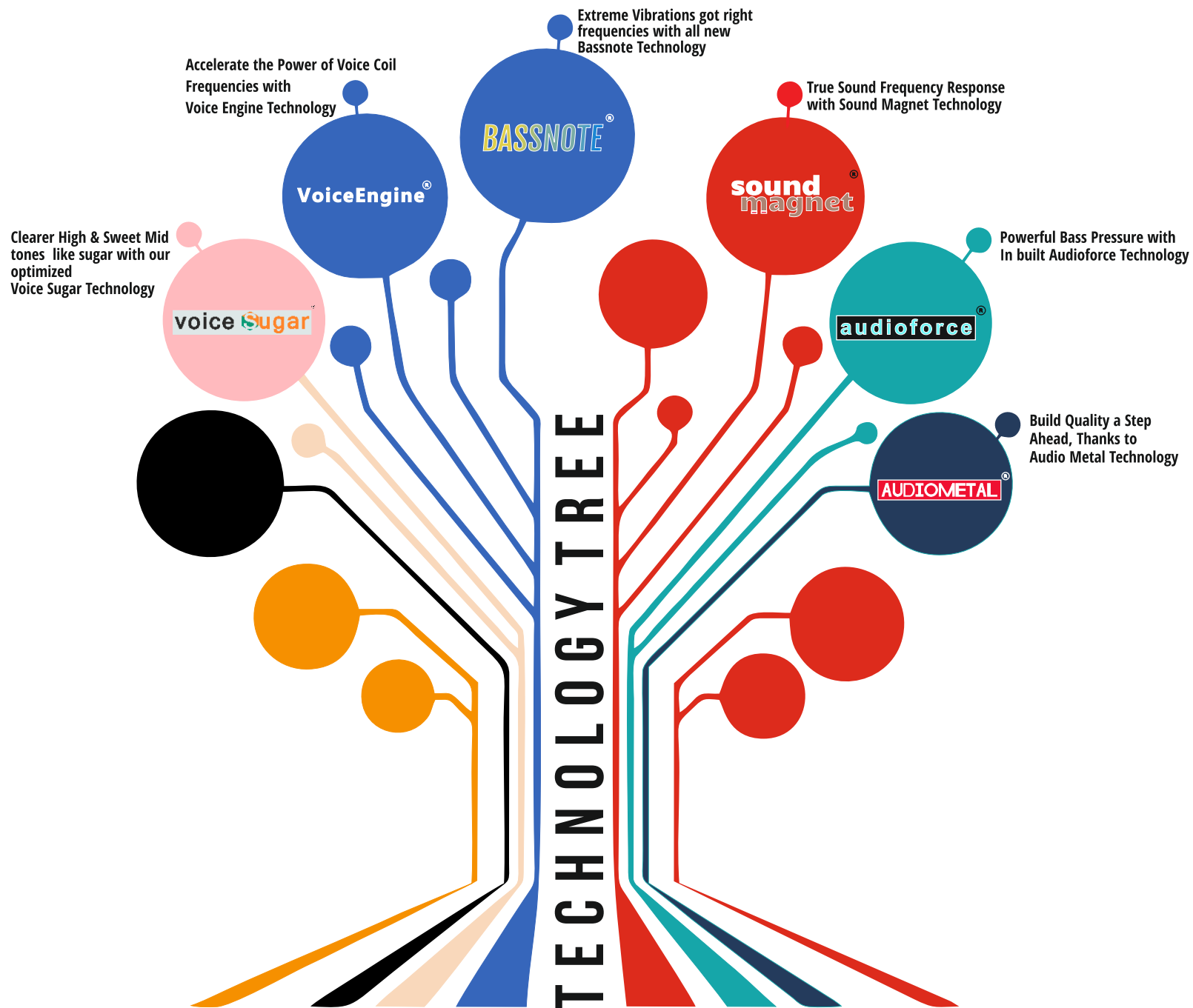
ENGINEERED IN ITALY
INDIA'S LEADING PRO AUDIO BRAND





We are working on various Technologies to give our customer enhanced experience on all our products.

“ TECHNOLOGY TREE ”



ENGINEERED IN ITALY

voice **Sugar**



JB60F

Premium Design + Economy Price

Power Rating 350W
Norminal Impedence 8 Ohm
Frame Aluminium Brushed
Voice Coil 2" TCCAR + Dual Coil
Size / Net Wt. 10" / 2.8 kg
Magnet Size 45x12 N40
Frequency 50 Hz - 3 KHz

voice **Sugar**



10NDL64

High Performance

Power Rating 400W
Norminal Impedence 16 Ohm
Frame Aluminium
Voice Coil 3" CCAW
Size / Net Wt. 10" / 3 Kg
Magnet Size 74x12 N40
Frequency 50 Hz - 3.5 KHz



10NDL85

NEW LAUNCH

HEAT SINK TECHNOLOGY

Power Rating 500W
Norminal Impedence 8 Ohm
Frame Aluminium
Voice Coil 3.5"
Sensitivity 96.5dB
Frequency 60Hz - 4 KHz
Magnet Size 80x10/ N40



LF12N75J

HOT SELLING

Power Rating 450W
Norminal Impedence 8 Ohm
Frame Aluminium
Voice Coil 3" CCAW
Size / Net Wt. 12" / 3.9kg
Magnet Size 70x12 N40
Frequency 50Hz - 3.5 KHz

voice **Sugar**

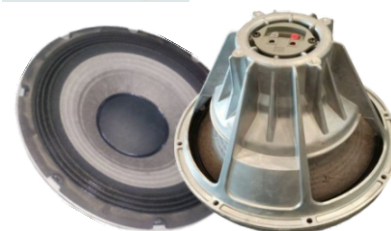


YX12N76

HIGH PERFORMANCE

Power Rating 650W
Norminal Impedence 8 Ohm
Frame Aluminium
Voice Coil 3" CCAW
Size / Net Wt. 12" / 3.8kg
Magnet Size 25x12x12 N40
Frequency 45 Hz - 2.5 KHz

voice **Sugar**



HP2262

PREMIUM MODEL

Power Rating 600W
Norminal Impedence 8 Ohm
Frame Aluminium Brushed
Voice Coil 3" CCAW- Dual Layer
Size / Net Wt. 12" / 4kg
Magnet Size 70x12 N40
Frequency 40 Hz - 2 KHz

NEO SERIES



MB12N351

HIGH TONE QUALITY

Power Rating	800W
Norminal Impedence	8 Ohm
Frame	Aluminium
Voice Coil	3.5" In/Out
Size / Net Wt.	12" / 4.8 kg
Magnet Size	80x10 N40
Frequency	40 Hz - 3.5 KHz

12



LF12N401

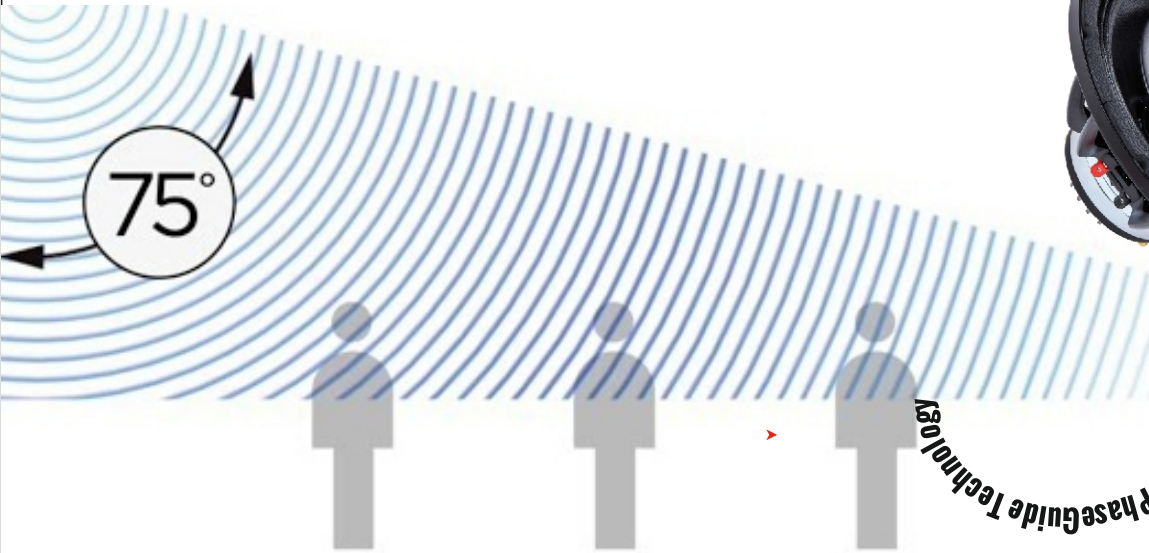
India's Most Powerful 12" Neo Speaker

Power Rating	800W
Norminal Impedence	8 Ohm
Frame	Aluminium
Voice Coil	4" In / Out
Size / Net Wt.	12" / 7 kg
Magnet Size	90x14 N40
Frequency	45 Hz - 2 KHz

12

12 **12HCX76**
NEO SERIES
voice Sugar

NEW PRODUCT



Worlds First Neo Speaker with PhaseGuide Technology

Provide Good Coverage Full Range Performance Best in Class with PhaseGuide Technology

LF UNIT
12" Woofer, Aluminium Basket
VC Size: 3" SV Inside-Out
Magnet: 120x80x8 N40 Neodymium
Sensitivity: 96db
Impedance: 8 Ohm
Power (RMS): 600W
Power (MAX): 1200W
Frequency Range: 55Hz - 4KHz

HF Unit
VC Size: 3" SV CCAR
Magnet: 120x80x8 N40 Neodymium
Sensitivity: 105db
Impedance: 8 Ohm
Power (RMS): 110W
Power (MAX): 220W
Frequency Range: 500Hz - 19KHz

voice **Sugar**

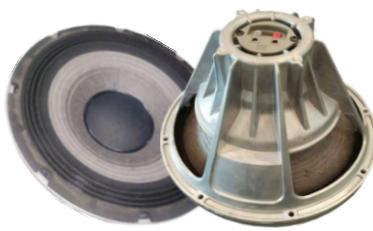


YX15N76

HIGH PERFORMANCE
HEAT SINK TECHNOLOGY

Power Rating 600W
Norminal Impedence 8 Ohm
Frame Aluminium
Voice Coil 3" CCAW
Size / Net Wt. 15" / 4kg
Magnet Size 25x12x12 N40
Frequency 35 Hz - 3.5 KHz

voice **Sugar**



2265HPL

PREMIUM MODEL

Power Rating 600W
Norminal Impedence 8 Ohm
Frame Aluminium Brushed
Voice Coil 3" CCAW - Dual Layer
Size / Net Wt. 15" / 4kg
Magnet Size 70x12 N40
Frequency 40 Hz - 2.0 KHz

voice **Sugar**



MB15N351

HIGH TONE QUALITY

Power Rating 800W
Norminal Impedence 8 Ohm
Frame Aluminium
Voice Coil 3.5" In/Out
Size / Net Wt. 15" / 5 kg
Magnet Size 25x12x12 N40
Frequency 40 Hz - 3.5 KHz

voice **Sugar**



LF15N401

India's Most Powerful 15"
Neo Speaker

Power Rating 800W
Norminal Impedence 8 Ohm
Frame Aluminium
Voice Coil 4" In / Out
Size / Net Wt. 15" / 7.5kg
Magnet Size 90x14 N40
Frequency 35 Hz - 1.5 KHz

NEO
ERIES



YX18SW115

HIGH BASS

Power Rating 1500W
Norminal Impedence 8 Ohm
Frame Aluminium
Voice Coil 4.5" SV In/Out
Size / Net Wt. 18" / 10 kg
Magnet Size 105x50x15 N40
Frequency 35 Hz - 2.0 KHz

NEO
ERIES

ATI PRO EXCLUSIVE DESIGN



YX18ND127

India's Most Powerful 18"
Neo Speaker

Power Rating 1700W
Norminal Impedence 8 Ohm
Frame Aluminium
Voice Coil 5" SV In/Out
Size / Net Wt. 18" / 10 kg
Magnet Size 120x14 N40
Frequency 35 Hz - 2.5 KHz

2024
SERIES



21NW152

Power Rating	2500W
Nominal Impedance	8 Ohm
Frame	Aluminium
Voice Coil	6" In/Out
Size/ Net wt.	21/ 12.5 Kgs
Magnet	150x50x15/ N40 Mm/OZ
Frequency	30 Hz - 2 Khz

FERRITE SERIES



1076Y

MALAYSIAN CONE

India's Most Powerful 10" Ferrite DJ Speaker

Power Rating	400W
Norminal Impedence	8 Ohm
Frame	Aluminium Yellow
Voice Coil	3" CCAW
Size / Net Wt.	10" / 6 kg
Magnet Size	190x90x20 Y35
Frequency	50 Hz - 3 KHz

10

FERRITE SERIES



HY1201

PREMIUM MODEL

Power Rating	200W
Norminal Impedence	8 Ohm
Frame	Metal
Voice Coil	2.5 SV
Size / Net Wt.	12" / 4 kg
Magnet Size	156x80x20 Y35
Frequency	50 Hz - 3.5 KHz

12

FERRITE SERIES



DX-12FRX

Power Rating	150W
Norminal Impedence	6.2 Ohm
Frame	Metal
Voice Coil	1.5" / 48.5MM
Size / Net Wt.	12" / 3.5Kgs
Magnet Size	156x75x20 Y35
Frequency	80 Hz - 15 KHz

12

FERRITE SERIES



DX-12F200

Power Rating	200W
Norminal Impedence	8 Ohm
Frame	Metal
Voice Coil	2" / 48.5MM
Size / Net Wt.	12" / 4Kgs
Magnet Size	156x75x20 Y35
Frequency	60Hz - 16KHz

12

FERRITE SERIES



HY1202

Economy Choice For Line Array

Power Rating	400W
Norminal Impedence	8 Ohm
Frame	Aluminium
Voice Coil	2.5"
Size / Net Wt.	12" / 5 kg
Magnet Size	190x90x20 Y35
Frequency	45 Hz - 3 KHz

12

FERRITE SERIES



LF12G301

India's First 400W Speaker With Heat Sink Technology

Power Rating	400W
Norminal Impedence	8 Ohm
Frame	Aluminium
Voice Coil	3" CCAW - In/Out
Size / Net Wt.	12" / 7 kg
Magnet Size	190x90x20 Y35
Frequency	45 Hz - 2.5 KHz

12

2024 SERIES

FERRITE SERIES



YX12X301 II

COPPER COOLING RING

PREMIUM MODEL

Power Rating	450W
Norminal Impedence	8 Ohm
Frame	Aluminium
Voice Coil	3" In/Out
Size / Net Wt.	12" / 7.5 Kg
Magnet Size	190x90x25 Y35
Frequency	50 Hz - 3.0 KHz

HEAT SINK TECHNOLOGY VER 3.0

2024 SERIES
ATI PRO EXCLUSIVE DESIGN

FERRITE SERIES



1276Y

SUPER TONE QUALITY

MALAYSIAN CONE

Power Rating	500W
Norminal Impedence	8 Ohm
Frame	Aluminium
Voice Coil	3" SV In/Out
Size / Net Wt.	12" / 8 Kg
Magnet Size	190x90x25 Y35
Frequency	45 Hz - 3.0 KHz

FERRITE SERIES



YX12X351 II

COPPER COOLING RING

PREMIUM MODEL

Power Rating	550W
Norminal Impedence	8 Ohm
Frame	Aluminium
Voice Coil	3.5" In/Out
Size / Net Wt.	12" / 7.5 Kg
Magnet Size	190x90x25 Y35
Frequency	50 Hz - 3.0 KHz

HEAT SINK TECHNOLOGY VER 3.0

2024 SERIES
ATI PRO EXCLUSIVE DESIGN

FERRITE SERIES



LF12G401

**INDIA'S MOST POWERFUL
12" FERRITE DJ SPEAKER**

Power Rating	600W
Norminal Impedence	8 Ohm
Frame	Aluminium
Voice Coil	4" In/Out
Size / Net Wt.	12" / 9.5kg
Magnet Size	220x110x25 Y35
Frequency	40Hz - 2.0 KHz

FERRITE SERIES



HY1501

Power Rating	350W
Norminal Impedence	8 Ohm
Frame	Iron
Voice Coil	3" SV
Size / Net Wt.	15" / 5 kg
Magnet Size	170x80x20 Y35
Frequency	45Hz - 3.0 KHz

FERRITE SERIES



HY1502

Power Rating	400W
Norminal Impedence	8 Ohm
Frame	Aluminium
Voice Coil	3" SV
Size / Net Wt.	15" / 7 kg
Magnet Size	185x90x20 Y35
Frequency	45Hz - 3.0 KHz

FERRITE SERIES



*** 15PS/6/PS400***
PS400 - ECONOMY MODEL
HOT SELLING MODEL

Power Rating 400W
Norminal Impedence 8 Ohm
Frame Aluminium
Voice Coil 3" SV
Size / Net Wt. 15" / 9 Kg
Magnet Size 190x90x20 Y35
Frequency 50 Hz - 3.5 KHz

FERRITE SERIES



ZX15X301

HEAT SINK TECHNOLOGY

Power Rating 400W
Norminal Impedence 8 Ohm
Frame Aluminium
Voice Coil 3" SV
Size / Net Wt. 15" / 9.5 Kg
Magnet Size 190x90x20 Y35
Frequency 35Hz - 2.5KHz

FERRITE SERIES



BM400

Power Rating 400W
Norminal Impedence 8 Ohm
Frame Aluminium
Voice Coil 3" SV
Size / Net Wt. 15" / 9 Kg
Magnet Size 190x90x20 Y35
Frequency 50 Hz - 3.5 KHz

FERRITE SERIES



15PHL76

CLEAR SOUND + TECHNOLOGY

25% MORE LOUDNESS

Power Rating 400W
(+25% Loudness)
Norminal Impedence 8 Ohm
Frame Aluminium
Voice Coil 3" SV
Size / Net Wt. 15" / 9.5 Kg
Magnet Size 190x90x25 Y35
Frequency 45 Hz - 3.5 KHz

FERRITE SERIES



YX15X301 II

COPPER COOLING RING

PREMIUM MODEL

Power Rating 400W
Norminal Impedence 8 Ohm
Frame Aluminium
Voice Coil 3" SV
Size / Net Wt. 15" / 9.5 Kg
Magnet Size 190x90x20 Y35
Frequency 40Hz - 5KHz

HEAT SINK TECHNOLOGY VER 3.0

FERRITE SERIES



ZX15X351

HEAT SINK TECHNOLOGY

Power Rating 550W
Norminal Impedence 8 Ohm
Frame Aluminium
Voice Coil 3.5" CCAW
Size / Net Wt. 15" / 11 kg
Magnet Size 200x100x25 Y35
Frequency 35Hz - 3KHz

HEAT SINK TECHNOLOGY VER 3.0

2024 SERIES
ATI PRO EXCLUSIVE DESIGN

2024 SERIES
ATI PRO EXCLUSIVE SERIES

FERRITE SERIES



YX15X351 II

COPPER COOLING RING

PREMIUM MODEL

Power Rating **575W**
 Norminal Impedence 8 Ohm
 Frame Aluminium
 Voice Coil 3.5" CCAW
 Size / Net Wt. 15" / 11 kg
 Magnet Size 200x100x25 Y35
 Frequency 45 Hz - 3.0 KHz

2024 SERIES

FERRITE SERIES



LX15400

ECONOMY MODEL

Power Rating **600W**
 Norminal Impedence 8 Ohm
 Frame Aluminium
 Voice Coil 4" In / Out
 Size / Net Wt. 15" / 11.4 kg
 Magnet Size 220x110x25 Y35
 Frequency 35 Hz - 2.0 KHz

FERRITE SERIES



YX15X635

UNIQUE FRAME DESIGN

HEAT SINK TECHNOLOGY

Power Rating **600W**
 Norminal Impedence 8 Ohm
 Frame Aluminium
 Voice Coil 4" In / Out
 Size / Net Wt. 15" / 11.4 Kg
 Magnet Size 220x110x25 Y35
 Frequency 35 Hz - 2.0 KHz

FERRITE SERIES



PHL100

25% MORE LOUDNESS

CLEAR SOUND + TECHNOLOGY

Power Rating **600W**
 (+25% Loudness)
 Norminal Impedence 8 Ohm
 Frame Aluminium
 Voice Coil 4" In / Out
 Size / Net Wt. 15" / 11.4 Kg
 Magnet Size 220x110x25 Y35
 Frequency 40 Hz - 3.0 KHz

ATI PRO NEW LAUNCH

FERRITE SERIES



YX15X600 II

COPPER COOLING RING

NEW LAUNCH 2023

Power Rating **800W**
 Norminal Impedence 8 Ohm
 Frame Aluminium
 Voice Coil 4" In / Out
 Size / Net Wt. 15" / 11.4 kg
 Magnet Size 220x110x25 Y35
 Frequency 45 Hz - 2.0 KHz

ATI PRO EXCLUSIVE FRAME DESIGN

FERRITE SERIES



ZX15X600

HEAT SINK TECHNOLOGY

Power Rating **800W**
 Norminal Impedence 8 Ohm
 Frame Aluminium
 Voice Coil 4" In / Out
 Size / Net Wt. 15" / 11.4 kg
 Magnet Size 220x110x25 Y35
 Frequency 40Hz - 2KHz

2024 SERIES

HEAT SINK TECHNOLOGY VER 3.0

PREMIUM MODEL

FERRITE SERIES



PD1560

HOT SELLING MODEL

2024 SERIES
ATI PRO EXCLUSIVE SERIES

Power Rating 800W
Norminal Impedence 8 Ohm
Frame Aluminium
Voice Coil 4" In / Out
Size / Net Wt. 15" / 12 Kg
Magnet Size 220x110x30 Y35
Frequency 45 Hz - 3.5 KHz

15

FERRITE SERIES



15TBW100

HOT SELLING MODEL

Power Rating 800W
Norminal Impedence 8 Ohm
Frame Aluminium
Voice Coil 4" In / Out
Size / Net Wt. 15" / 12 Kg
Magnet Size 220x110x30 Y35
Frequency 45 Hz - 3.5 KHz

15

FERRITE SERIES



P2226

HOT SELLING MODEL

Power Rating 1000W
Norminal Impedence 8 Ohm
Frame Aluminium
Voice Coil 4" In / Out
Size / Net Wt. 15" / 12 Kg
Magnet Size 220x110x30 Y35
Frequency 40Hz - 3.5KHz

15

FERRITE SERIES



YX15X451 II

**INDIA'S MOST POWERFUL
15" SPEAKER WITH 4.5" VOICE COIL**

COPPER COOLING RING

ATI PRO EXCLUSIVE
FRAME DESIGN

Power Rating 1200W
Norminal Impedence 8 Ohm
Frame Aluminium
Voice Coil 4.5" In / Out
Size / Net Wt. 15" / 12.5 Kg
Magnet Size 250x140x25 Y35
Frequency 40Hz - 2KHz

15

HEAT SINK TECHNOLOGY VER 3.0

PREMIUM MODEL

FERRITE SERIES



LX18400

ECONOMY MODEL

Power Rating 1000W
Norminal Impedence 8 Ohm
Frame Aluminium
Voice Coil 4" In / Out
Size / Net Wt. 18" / 12 kg
Magnet Size 220x110x25 Y35
Frequency 35 Hz - 2.5 KHz

18

FERRITE SERIES



YX18X635

UNIQUE FRAME DESIGN

SIDE HEAT SINK TECHNOLOGY

Power Rating 1200W
Norminal Impedence 8 Ohm
Frame Aluminium
Voice Coil 4" In / Out
Size / Net Wt. 18" / 13 Kg
Magnet Size 220x110x25 Y35
Frequency 35Hz - 2.0 Khz

18



YX18X600 II

COPPER COOLING RING

PREMIUM MODEL

Power Rating	1200W
Norminal Impedence	8 Ohm
Frame	Aluminium
Voice Coil	4" In / Out
Size / Net Wt.	18" / 12.5 kg
Magnet Size	220x110x25 Y35
Frequency	40Hz - 2.0 Khz

HEAT SINK TECHNOLOGY VER 3.0



HY1822

LONG THROW BASS

MALAYSIAN GLASS FIBER CONE

Power Rating	1200W
Norminal Impedence	8 Ohm
Frame	Aluminium
Voice Coil	4" In / Out
Size / Net Wt.	18" / 13.5 Kg
Magnet Size	220x110x25 Y35
Frequency	35Hz - 2.5 Khz



ATI1200

HEAT SINK TECHNOLOGY

Power Rating	1200W
Norminal Impedence	8 Ohm
Frame	Aluminium
Voice Coil	4" In / Out
Size / Net Wt.	18" / 12.5 Kg
Magnet Size	220x110x25 Y35
Frequency	35 Hz - 2.5 KHz



18TBW100[®]

HOT SELLING MODEL

Power Rating	1500W
Norminal Impedence	8 Ohm
Frame	Aluminium
Voice Coil	4" In / Out
Size / Net Wt.	18" / 14 kg
Magnet Size	220x110x30 Y35
Frequency	35 Hz - 2.0 KHz



18TBW200[®]

HEAT SINK TECHNOLOGY

Power Rating	1500W
Norminal Impedence	8 Ohm
Frame	Aluminium
Voice Coil	4" In / Out
Size / Net Wt.	18" / 14 kg
Magnet Size	220x110x30 Y35
Frequency	35 Hz - 2.0 KHz



18TLW3000[®]

Power Rating	1500W
Norminal Impedence	8 Ohm
Frame	Aluminium
Voice Coil	4" Dual Layer + Dual Winding
Size / Net Wt.	18" / 18 kg
Magnet Size	220x110x30 Y35
Frequency	30Hz - 2.0 Khz

FERRITE SERIES

VoiceEngine[°] audioforce



GPA18100

DOUBLE LAYER VOICE COIL WITH DUAL WINDING

Power Rating	1500W
Norminal Impedence	8 Ohm
Frame	Aluminium
Voice Coil	4" SV 4 Layers
Size / Net Wt.	18" / 15 kg
Magnet Size	220x110x20 Y35 (Double Magnet)
Frequency	36 Hz - 1.8 KHz

audioforce VoiceEngine[°] **BASSNOTE**



LF451

HEAT SINK TECHNOLOGY

Power Rating	1500W
Norminal Impedence	8 Ohm
Frame	Aluminium
Voice Coil	4.5" In / Out
Size / Net Wt.	18" / 20 Kg
Magnet Size	253x140x25 Y35
Frequency	35 Hz - 1.0 KHz

2024 SERIES

VoiceEngine[°] audioforce **BASSNOTE**



YX18X451 II

COPPER COOLING RING

HEAT SINK TECHNOLOGY VER 3.0

PREMIUM MODEL

Power Rating	1800W
Norminal Impedence	8 Ohm
Frame	Aluminium
Voice Coil	4.5" In / Out
Size / Net Wt.	18" / 20 Kg
Magnet Size	253x140x25 Y35
Frequency	35 Hz - 2.0 KHz

FERRITE SERIES

FERRITE SERIES

VoiceEngine[°] audioforce **BASSNOTE**



ZX18X451

HEAT SINK TECHNOLOGY

Power Rating	1800W
Norminal Impedence	8 Ohm
Frame	Aluminium
Voice Coil	4.5" In / Out
Size / Net Wt.	18" / 20 Kg
Magnet Size	253x140x25 Y35
Frequency	35 Hz - 1.5 KHz

2024 SERIES
ATI PRO EXCLUSIVE SERIES

VoiceEngine[°] audioforce **BASSNOTE**



18TBW300

HEAT SINK TECHNOLOGY

LONG THROW BASS

Power Rating	1600W
Norminal Impedence	8 Ohm
Frame	Aluminium
Voice Coil	4.5" In / Out
Size / Net Wt.	18" / 20 Kg
Magnet Size	253x140x25 Y35
Frequency	35 Hz - 1.5 KHz

ATI PRO EXCLUSIVE
FRAME DESIGN

FERRITE SERIES

HIGH STRENGTH CARBON CONE



TX18X451

WATER PROOF CONE

HEAT SINK TECHNOLOGY

Power Rating	1800W
Norminal Impedence	8 Ohm
Frame	Aluminium
Voice Coil	4.5" In / Out
Size / Net Wt.	18" / 21 kg
Magnet Size	253x140x25 Y35
Frequency	40Hz - 2KHz

ATI PRO EXCLUSIVE
FRAME DESIGN

PREMIUM MODEL

audioforce **BASSNOTE**



YX18GPA200 II

COPPER COOLING RING

**WORLD'S MOST UNIQUE
18" DOUBLE MAGNET SPEAKER**

Power Rating	1700W
Norminal Impedence	8 Ohm
Frame	Aluminium
Voice Coil	4" Four Layer
Size / Net Wt.	18" / 22 Kg
Magnet Size	220x110x20 Y35 (Double Magnet)
Frequency	30Hz - 1.5KHz

ATI PRO EXCLUSIVE SERIES

FERRITE SERIES

VoiceEngine audioforce **BASSNOTE**



YXGPA300 II

NEW LAUNCH 2023

**WORLD'S MOST UNIQUE
18" DOUBLE MAGNET SPEAKER**

Power Rating	1999 + 200W
Norminal Impedance	8 ohms
Frequency	40Hz - 2.0KHz
Weight	24 Kg
Magnet Size	(250x140x25)x2 Y35

FERRITE SERIES

VoiceEngine audioforce **BASSNOTE**



PD1850 PLATINUM / *PD1852
* Economic Model

**INDIA'S LARGEST SELLING
5" VOICE COIL SPEAKER**

Power Rating	2000W
Norminal Impedence	8 Ohm
Frame	Aluminium
Voice Coil	5" In / Out
Size / Net Wt.	18" / 22 Kg
Magnet Size	280x140x25 Y35 (4 Pcs Magnet)
Frequency	35 Hz - 1.5 KHz

VoiceEngine **BASSNOTE**



YX1850 PREMIUM

DOUBLE SPIDER RING

**INDIA'S FIRST 18", 5" VOICE COIL
SPEAKER WITH HEAT SINK TECHNOLOGY**

Power Rating	1800W
Norminal Impedence	8 Ohm
Frame	Aluminium
Voice Coil	5" In / Out
Size / Net Wt.	18" / 22 Kg
Magnet Size	280x140x25 Y35 (4 Pcs Magnet)
Frequency	35 Hz - 1.5 KHz

SUPER PREMIUM MODEL

ATI PRO EXCLUSIVE
FRAME DESIGN

FERRITE SERIES

VoiceEngine audioforce **BASSNOTE**



18TLW4000

ROCKET SERIES

FIRST TIME IN THE WORLD

Power Rating	2000W
Norminal Impedence	4 Ohm
Frame	Aluminium
Voice Coil	4" Dual In/ Out Tetra + Four Layer
Size / Net Wt.	18" / 20 Kg
Magnet Size	220x110x30 Y35 (Double Magnet)
Frequency	35 Hz - 2 KHz

2024 SERIES
ATI PRO EXCLUSIVE SERIES

FERRITE SERIES

VoiceEngine audioforce **BASSNOTE**



TX1850

WATER PROOF CONE

DOUBLE SPIDER RING

Power Rating	1999-150W
Norminal Impedence	8 Ohm
Frame	Aluminium
Voice Coil	5" In / Out
Size / Net Wt.	18" / 22 Kg
Magnet Size	280x140x25 Y35 (4 Pcs Magnet)
Frequency	35 Hz - 1.5 KHz

SUPER PREMIUM MODEL

**INDIA'S FIRST 18", 5" VOICE COIL
SPEAKER WITH CARBON CONE**

VoiceEngine[®] audioforce **BASSNOTE[®]**



PD1870[®]

IMPROVED SPIDER SUSPENSION

WORLD'S MOST POWERFUL 18" 5" VOICE COIL SPEAKER

ATI PRO EXCLUSIVE FRAME DESIGN

VoiceEngine[®] audioforce **BASSNOTE[®]**



PD1880[®]

WORLD'S MOST POWERFUL 18" 6" VOICE COIL SPEAKER

2024 SERIES ATI PRO EXCLUSIVE SERIES

VoiceEngine[®] audioforce **BASSNOTE[®]**



HY2112

HEAT SINK TECHNOLOGY

FERRITE SERIES

FERRITE SERIES

FERRITE SERIES

Power Rating	2200W
Norminal Impedence	8 Ohm
Frame	Aluminium
Voice Coil	5" In / Out
Size / Net Wt.	18" / 30 Kg
Magnet Size	280x140x25 Y35 (Double Magnet)
Frequency	20Hz - 2.0KHz

Power Rating	2300W
Norminal Impedence	8 Ohm
Frame	Aluminium
Voice Coil	6" In/ Out
Size / Net Wt.	18" / 25 Kg
Magnet Size	330x170x25 Y35 (4PC Magnet)
Frequency	30 Hz - 1.5 KHz

Power Rating	2000W
Norminal Impedence	8 Ohm
Frame	Aluminium
Voice Coil	5" SV In / Out
Size / Net Wt.	21" / 17 kg
Magnet Size	280x140x25 Y35
Frequency	42Hz - 1Khz

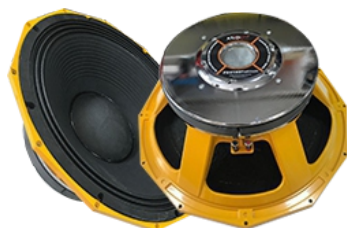
VoiceEngine[®] audioforce **BASSNOTE[®]**



PD2155[®]

2024 SERIES ATI PRO EXCLUSIVE SERIES

VoiceEngine[®] audioforce **BASSNOTE[®]**



PD2160 PLATINUM[®]

HOT SELLING MODEL

2024 SERIES ATI PRO EXCLUSIVE SERIES

VoiceEngine[®] audioforce **BASSNOTE[®]**



PD2460 PLATINUM[®]

WORLD'S MOST POWERFUL PRACTICAL DJ SPEAKER

FERRITE SERIES

FERRITE SERIES

FERRITE SERIES

Power Rating	3000W
Norminal Impedence	8 Ohm
Frame	Aluminium
Voice Coil	5.5" In / Out
Size / Net Wt.	18" / 25 Kg
Magnet Size	2x(280x140x25) (Y35 Magnet)
Frequency	30 Hz - 1.5 KHz

Power Rating	2500W
Norminal Impedence	8 Ohm
Frame	Aluminium
Voice Coil	6" In / Out
Size / Net Wt.	21" / 20 kg
Magnet Size	330x170x25 Y35 (4PC Magnet)
Frequency	35 Hz - 1.5 KHz

Power Rating	3000W
Norminal Impedence	8 Ohm
Frame	Aluminium
Voice Coil	6" In/Out
Size / Net Wt.	24" / 31.5 kg
Magnet Size	330x170x25 Y35 (4PC Magnet)
Frequency	35Hz - 1.5Khz



HD SERIES
YX15X800-HD

Power Rating 1100W
Nominal Impedance 8 Ohm
Frame Aluminium
Voice Coil 4"
Size/ Net wt. 15'/ 24.8 Kgs
Magnet Size (220x110x30) /Y35
Frequency 40 Hz - 3 KHz



HD SERIES
YX15X451-HD

Power Rating 1500W
Nominal Impedance 8 Ohm
Frame Aluminium
Voice Coil 4.5"
Size/ Net wt. 15'/ 24.8 Kgs
Magnet Size (253x140x30) /Y35
Frequency 35 Hz - 3 KHz



HD SERIES
LF18X451-HD

Power Rating 1900W
Nominal Impedance 8 Ohm
Frame Aluminium
Voice Coil 4.5"
Size/ Net wt. 18'/ 18.9.8 Kgs
Magnet Size (254x140x30) /Y35
Frequency 30Hz - 1.5KHz



HD SERIES
PD-1850-HD

Power Rating 2300W
Nominal Impedance 8 Ohm
Frame Aluminium
Voice Coil 5"
Size/ Net wt. 18'/ 18.9 Kgs
Magnet Size (280x140x30) /Y35
Frequency 30 Hz - 1.5 KHz



HD SERIES
YXGPA451-HD

Power Rating 2500W
Nominal Impedance 8 Ohm
Frame Aluminium
Voice Coil 4.5"
Size/ Net wt. 18'/ 28.6 Kgs
Magnet Size (253x40x30) /Y35
Frequency 30 Hz - 2 KHz



HD SERIES
PD-2160-HD

Power Rating 3000W
Nominal Impedance 8 Ohm
Frame Aluminium
Voice Coil 6"
Size/ Net wt. 21'/ 31.5 Kgs
Magnet Size (330x170x30) /Y35
Frequency 30 Hz - 1.5 KHz

TITANIUM SERIES



YX1855
TITANIUM SERIES

25% MORE LOUDNESS TECHNOLOGY

Power Rating 1999+300W
Nominal Impedance 8 Ohm
Frame Aluminium
Voice Coil 5"
Size/ Net wt. 18'/ 20.5 Kgs
Magnet Size 280x140x25/ Y35
Frequency 37 Hz - 1.5 KHz

18

TITANIUM SERIES



YX1865
TITANIUM SERIES

TURBO HEAT SINK TECHNOLOGY

25% MORE LOUDNESS TECHNOLOGY

Power Rating 1999+300W
Nominal Impedance 8 Ohm
Frame Aluminium
Voice Coil 5.5"
Size/ Net wt. 18'/ 24.5 Kgs
Magnet Size 300x170x25/Y35
Frequency 36 Hz - 1.5 KHz

18

TITANIUM SERIES



YX1875
TITANIUM SERIES

TURBO HEAT SINK TECHNOLOGY

25% MORE LOUDNESS TECHNOLOGY

Power Rating 1999+650W
Nominal Impedance 8 Ohm
Frame Aluminium
Voice Coil 5"
Size/ Net wt. 18'/ 30.5 Kgs
Magnet Size (280x140x252)x2 /Y35
Frequency 36 Hz - 1.3 KHz

18

TITANIUM SERIES



YX1885
TITANIUM SERIES

TURBO HEAT SINK TECHNOLOGY

25% MORE LOUDNESS TECHNOLOGY

Power Rating 1999+300W
Nominal Impedance 8 Ohm
Frame Aluminium
Voice Coil 6"
Size/ Net wt. 18'/ 28.5 Kgs
Magnet Size 330x170x25/35
Frequency 37 Hz - 1.5 KHz

18

NEWLY LAUNCHED
TITANIUM
SERIES

India's Best
18"

High Performance
Bass Speakers
Yet!



CEILING SPEAKERS



2 WAY PA WALL SPEAKER

PS400T - Movable Wall mounting speaker column
Input Power- 16W RMS/ 24W Max
Power Taps on 100V 16/ 8/4 W
Speaker 4" woofer & 2" Tweeter
Speaker Impedance 8 Ohm
Frequency Response 50 Hz to 20 KHz
SPL at 1 KHz (1W/ 1M) 86dB
Dimension W 133 x H 187 x D 107mm



**GARDEN SPEAKER
WITH MULTICOLOR LIGHTENING**

1X6" Full Rang Speaker
Frequency Response 160 Hz to 16k Hz
SPL at 1 KHz (1W/ 1M) 88dB
Power 20 W on 100V line
Dimension W 120 x H 1050 mm

NEO DRIVER UNIT

ATIPRO has the largest range of NEO Drivers in India.



DE400

Nominal impedance 8 ohm
Power Capacity 50W
Frequency Range 600Hz-20KHz
Sensitivity 106db/m.w
Diaphragm Material PEN
Voice Coil KCCAR44.4mm (1.75")
Magnet 85x56x5mm
Throat 25mm(1")



DE500

Nominal impedance 8 ohm
Power Capacity 60W
Frequency Range 600Hz-20KHz
Sensitivity 107db/m.w
Diaphragm Material Titanium
Voice Coil KCCAR44.4mm (1.75")
Magnet 102x60x7mm
Throat 25mm(1")



DE800

Power Capacity 220W (Max)
Throat Diameter 36mm (1.4in.)
Mounting Type Bolt-on
Nominal Impedance 8 Ohm
Power Capacity 110W
Sensitivity (1W/1M) 112dB
Usable Frequency Range 600Hz - 18KHz
Voice Coil Diameter 75mm(3")
Magnet Type Neodymium



TN880

Power Capacity 220W (Max)
Throat Diameter 36mm (1.4in.)
Mounting Type Screw on 1-3/8"
Nominal Impedance 8 Ohm
Power Capacity 110W
Sensitivity (1W/1M) 108dB
Usable Frequency Range 600Hz - 20KHz
Voice Coil Diameter 75mm(3")
Magnet 124x80x8mm



ND2545

Nominal impedance 8 ohm
Power Capacity 50W
Frequency Range 1000Hz-20KHz
Sensitivity 107db/m.w
Diaphragm Material Fiber
Voice Coil ALW44.4mm (1.75")
Magnet 80x50x5mm
Throat 25mm(1")



ATI1004ND

Throat 2 Inch
Normal Impedance 8 Ohm
Sensitivity 118 dB
Frequency Range 300-20 KHz
Middle Range (AES) 150 W
High Range (AES) 80 W
Middle Frequency Range 300-7 KHz
High Frequency Range 500-20 KHz
Voice Coil Diameter 3.5/ 1.75 Inch
Voice Coil Material CCAW in/out
Voice Coil Former Kapton
Diaphragm Material Polyester
Magnet Type Neodymium



VRX

Nominal impedance 8 ohm (AC)
Power Capacity 60W
Frequency Range 600KHz-20KHz
Sensitivity 108db/m.w
Diaphragm Material Titanium
Voice Coil KCCAR38.6mm (1.5")
Magnet 70x45x6mm
Throat 25mm(1")

EXCLUSIVE SERIES FERRITE DRIVERS

Original design & reliable quality.
Exclusive series drivers bears ATIPRO name & Trust.
First time in the world brand name is embossed on HF drives.



A450

Throat 1 inch
Nominal Impedance 8 ohm
Nominal Power Handling 60 watt
Continuous Power Handling 120 watt
Sensitivity(1W/1m) 110 ±2dB
Frequency Range(-10dB max) 1200-20000 Hz
Voice Coil Diameter 1.75 inch
Voice Coil Material CCAW
Former Material Kapton
Diaphragm Material Titanium
Magnet Type Strontium Ferrite
Magnet Sizes 115mm
Cover (or Adaptor) Material Plastic



A518

Throat 1 inch
Nominal Impedance 8 ohm
Nominal Power Handling 80 watt
Continuous Power Handling 160 watt
Sensitivity(1W/1m) 110 ±2dB
Frequency Range(-10dB max) 1000-18000 Hz
Voice Coil Diameter 2 inch
Voice Coil Material CCAW
Former Material Kapton
Diaphragm Material Titanium
Magnet Type Strontium Ferrite
Magnet Sizes 134mm
Cover (or Adaptor) Material Plastic



A750

Throat 2 inch
Nominal Impedance 8 ohm
Nominal Power Handling 110 watt
Continuous Power Handling 220 watt
Sensitivity(1W/1m) 106 ±2dB
Frequency Range(-10dB max) 600-16000 Hz
Voice Coil Diameter 3 inch
Voice Coil Material CCAW
Former Material Kapton
Diaphragm Material Titanium
Magnet Type Strontium Ferrite
Magnet Sizes 170mm
Cover (or Adaptor) Material Aluminium



A800

Throat 2 inch
Nominal Impedance 8 ohm
Nominal Power Handling 110 watt
Continuous Power Handling 220 watt
Sensitivity(1W/1m) 106 ±2dB
Frequency Range(-10dB max) 600-16000 Hz
Voice Coil Diameter 3 inch
Voice Coil Material ALR
Former Material Kapton
Diaphragm Material Blue Titanium
Magnet Type Strontium Ferrite
Magnet Sizes 170mm
Cover (or Adaptor) Material Aluminium

450HD

Throat 1 Inch
Nominal Impedance 8 Ohm
Nominal Power Handling 70 Watts
Sensitivity (1W/ 1m) 140 Watts
Frequency Range (-10dB max) 110 +- 2dB
1200Hz - 20KHz
Voice Coil Diameter 1.75 Inches
Voice Coil Material CCAW
Former Material Kapton
Diaphragm Material Titanium
Magnet Type Strontium Ferrite
Magnet Size 115x15mm
Cover (or adaptor) Material Plastic



518HD

Throat 1 Inch
Nominal Impedance 8 Ohm
Nominal Power Handling 90 Watts
Sensitivity (1W/ 1m) 180 Watts
Frequency Range (-10dB max) 110 +- 2dB
1000Hz - 20KHz
Voice Coil Diameter 2 Inches
Voice Coil Material CCAW
Former Material Kapton
Diaphragm Material Titanium
Magnet Type Strontium Ferrite
Magnet Size 134x17mm
Cover (or adaptor) Material Plastic



750HD

Throat 2 Inches
Nominal Impedance 8 Ohm
Nominal Power Handling 125 Watts
Sensitivity (1W/ 1m) 250 Watts
Frequency Range (-10dB max) 110 +- 2dB
700Hz - 18KHz
Voice Coil Diameter 3 Inches
Voice Coil Material CCAW
Former Material Kapton
Diaphragm Material Titanium
Magnet Type Strontium Ferrite
Magnet Size 170x20mm
Cover (or adaptor) Material Aluminium



FERRITE SERIES DRIVER

voice **Sugar** sound **magnet**



D20 NEO HF

Throat 1 inch
Nominal Impedance 8 ohm
Nominal Power Handling 20 watt
Continuous Power Handling 40 watt
Sensitivity(1W/1m) 105 ±2dB
Frequency Range(-10dB max) 1500-20000 Hz
Voice Coil Diameter 1 inch
Voice Coil Material CCAW
Former Material Kapton
Diaphragm Material Titanium, Phenolic
Magnet Type Strontium NEO Inside Slug
Magnet Sizes 24mm
Cover(or Adaptor) Material Plastic



D26

Throat 1 inch
Nominal Impedance 8 ohm
Nominal Power Handling 25 watt
Continuous Power Handling 50 watt
Sensitivity(1W/1m) 106 ±2dB
Frequency Range(-10dB max) 1500-20000 Hz
Voice Coil Diameter 1 inch
Voice Coil Material CCAW
Former Material Kapton
Diaphragm Material Titanium, Phenolic
Magnet Type Strontium Strontium Ferrite
Magnet Sizes 80mm
Cover(or Adaptor) Material Plastic



350

Throat 1 inch
Nominal Impedance 8 ohm
Nominal Power Handling 35 watt
Continuous Power Handling 70 watt
Sensitivity(1W/1m) 107 ±2dB
Frequency Range(-10dB max) 1300-20000 Hz
Voice Coil Diameter 1.35 inch
Voice Coil Material CCAW
Former Material Kapton
Diaphragm Material Titanium, Phenolic
Magnet Type Strontium Strontium Ferrite
Magnet Sizes 90mm
Cover(or Adaptor) Material Plastic

NEW LAUNCH



DE160

Throat 1 Inch
Mounting Type Bolt-on
Nominal Impedance 8 Ohm
Max Power 100 watts
RMS Power 50 Watts
Sensitivity @1W/1m 110dB
Usable Frequency Range 1.0 - 20 kHz
Recommended Crossover 2.2 kHz or Higher
12 dB/ oct.min.
Voice Coil Diameter 1.75 Inch
Voice Coil Material CCAR
Voice Coil Former Kapton
Flux Density 1.6T
Magnet Type Strontium Ferrite
Diaphragm Material Polyester



1003

Throat 2 inch
Nominal Impedance 8 ohm
Nominal Power Handling 150 watt
Continuous Power Handling 300 watt
Sensitivity(1W/1m) 105 ±2dB
Frequency Range(-10dB max) 500-12000 Hz
Voice Coil Diameter 4.00 inch
Voice Coil Material CCAW
Former Material Kapton
Diaphragm Material Titanium, Phenolic
Magnet Type Strontium Strontium Ferrite
Magnet Sizes 190mm
Cover(or Adaptor) Material Aluminium

**BETTER THAN ANY
GENERIC BRANDS
IN THE MARKET**

ATI@PRO HF have genuine watts + true magnet size.

True TYOKE plates thickness

High quality diaphragm + Superior Packing



Platinum A550



ATI 150

Throat Diameter 1 In.
Voice Coil Diameter 1.75 In
Voice Coil Material Pure Aluminium Ribbon Wire
Nominal Impedance 8 Ohm
Mounting Type Blot-on
Frequency Range 1.5Khz - 18Khz
Sensitivity 113dB
Power Capacity 90 Watt RMS
Magnet Type Strontium Ferrite

Power Handling Capacity 150 W
Impedance 8 Ohms/ 16 Ohms

PRESSURE MID

voice **Sugar** sound **magnet**



A4590

Throat	2 Inch
Normal Impedance	8 Ohm
Sensitivity (1W/1m)	118 +- 2dB
Frequency Range	300-20 Khz
Middle Range (AES)	150 W
High Range (AES)	80 W
Frequency Range (-10dB Max)	300-9 Khz
Voice Coil Diameter	3.5 Inch
Voice Coil Material	CCAW
Voice Coil Former	Kapton
Diaphragm Material	Polyester
Magnet Type	Strontium Ferrite



A4592

Throat	2 Inch
Normal Impedance	8 Ohm
Sensitivity	118 dB
Frequency Range	300-20 Khz
Middle Range (AES)	150 W
High Range (AES)	80 W
Middle Frequency Range	300-7 Khz
High Frequency Range	500-20 Khz
Voice Coil Diameter	3.5/ 1.75 Inch
Voice Coil Material	CCAW in/out
Voice Coil Former	Kapton
Diaphragm Material	Polyester
Magnet Type	Neodymium



A4594

Throat	2 Inch
Normal Impedance	8 Ohm
Sensitivity	110 dB
Frequency Range	300-20 Khz
Middle Range (AES)	150 W
High Range (AES)	80 W
Middle Frequency Range	300-7 Khz
High Frequency Range	5000-20 Khz
Voice Coil Diameter	3.5/ 1.75 Inch
Voice Coil Material	CCAW
Voice Coil Former	Kapton
Diaphragm Material	PEN
Magnet Type	Neodymium



**EXCLUSIVE MODEL
WITH MORE POWER**

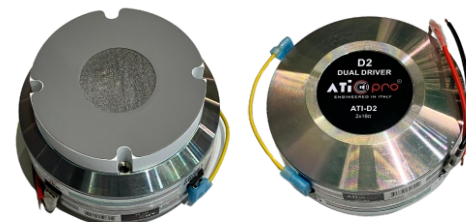
ATI4599

Throat	2 Inch
Normal Impedance	8 Ohm
Sensitivity (1W/1m)	112+-2 dB
Frequency Range	300-20 Khz
Middle Range (AES)	400 W
High Range (AES)	160 W
Frequency Range (-10dB)	700-18 Khz
Voice Coil Diameter	4 Inch
Voice Coil Material	CCAR
Voice Coil Former	Kapton
Diaphragm Material	Titanium
Magnet Type	NEO



ATI4599

Throat	2 Inch
Normal Impedance	16 Ohm
Sensitivity (1W/1m)	112+-2 dB
Frequency Range	300-20 Khz
Middle Range (AES)	400 W
High Range (AES)	160 W
Frequency Range (-10dB)	700-18 Khz
Voice Coil Diameter	4 Inch
Voice Coil Material	CCAR
Voice Coil Former	Kapton
Diaphragm Material	Titanium
Magnet Type	NEO

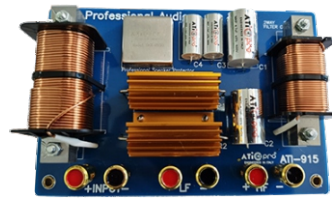


ATI D2 NEO HF

Throat	1.5 Inch
Normal Impedance	16 Ohm
Sensitivity (1W/1m)	112+-2 dB
Frequency Range	1-20 Khz
High Range (AES)	160 W
Voice Coil Diameter	2x3 Inch
Voice Coil Former	Kapton
Diaphragm Material	Polyester
Magnet Type	NEO

IMPORTED NETWORK PLATES

VoiceEngine[®]



MODEL - G12 +

Application
450 HF (60 Watts)

MODEL - G15 +

Application
750 HF (110 Watts)

MODEL - ATI-915 +

Application
1x300 - 800 Watts 15" Speakers
1x40 - 100 Watts HF

MODEL - ATI-425 +

Application
2x300 - 500 Watts 15" Speaker
1x40 - 100 Watts HF



MODEL - ATI-825 +

Application
2x600 - 1000 Watts 15" Speaker
1x110 - 150 w HF

MODEL - VRX932

Application
1x300 - 800 Watts Neo 12" Speakers
3x40 - 80 Watts Neo HF

MODEL - VT4888

Application
2x300 - 800 Watts Neo 12"-15" Speakers
2x80 - 110 Watts Neo HF

MODEL - VRX932 (with backplate)

Application
1x300 - 800 Watts Neo 12" Speakers
3x40 - 80 Watts Neo HF

“* All speaker network plates are made using components from Taiwan”

DJ BELTS

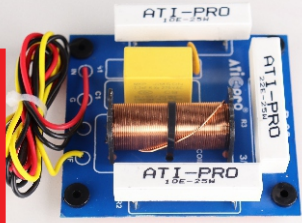
- True Length Belts
- Heavy locking system
- True width size
- Made with Italian Technology



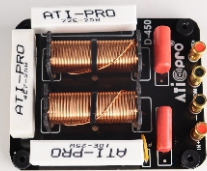
Available In 2x10 Meter, 2x15 Meter (Black & Blue Color)



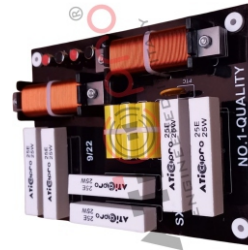
INDIAN SERIES NETWORKS



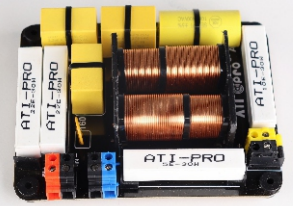
MODEL- D-26



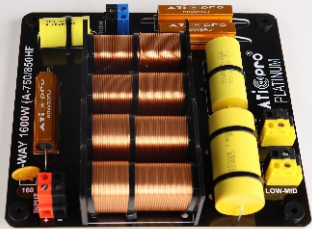
MODEL- D-450



MODEL- 1003



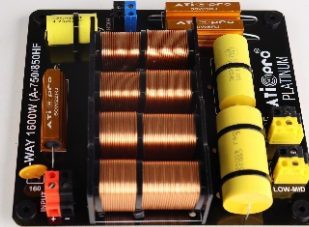
MODEL- A-4594



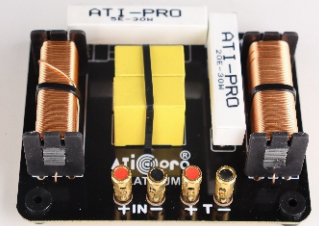
MODEL- A-750-850



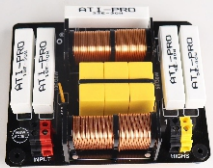
MODEL- HD-425 (3 WAY)



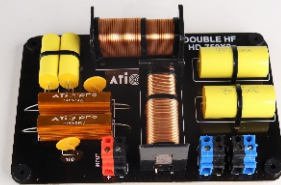
MODEL- HD-750-850



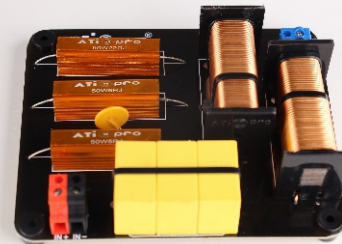
MODEL- HD-518



MODEL- A-750



MODEL- HD-750 X2



MODEL- HD-850

NEW RANGE OF INDIAN SERIES NETWORKS MADE IN INDIA



450



518



750



450-CAP

DIAPHRAGM

AtiPro's 100% Original Blue Diaphragm For High Quality



100% winding on all diaphragm for high quality sound.



RECONE KITS

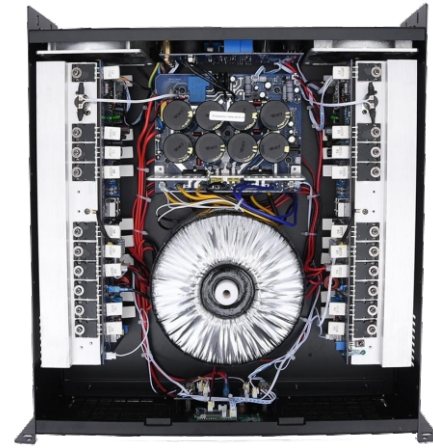
For ATI PRO Speakers we have original Recone Kits Available.



ATI-3000

MODEL NO. ATI-3000

2 ohms AT 1KHz at 1% THD	1250w
4 ohms AT 1KHz at 1% THD	800w
8 ohms AT 1KHz at 1% THD	500w
8 ohm Bridge	1500w
4 ohms Bridge	2300w
Distortion	<0.02%
S/N ratio	>95dB
Damping factor	>500
Freq. response	20Hz-20KHz
EIA RACK SPACE 2U DIM.(W X HD)MM	482 x 88 x 480
Weight	25.5KGS



DJ AMPLIFIER

RX4000 SERIES

Model	RX4000
8Ω stereo power	1000WX2
4Ω stereo power	1600WX2
8Ω Bridge Mono power	3600W
Frequency response	20HZ-20KHZ -2dB+2dB
THD+N(8OHM 1KHZ IN 1/4 OUTPUT)	<0.1%
Damping Factor(8 Ohm 1 K)	>400
Input Impedance (balanced and unbalanced)	>20kΩ>10k
Class	AB
Input connectors(per ch.)	3-pin XLR,electronically balanced
Link connectors(per ch.)	XLR,3 pin male
Amplifier Protection	Protection of short circuit,overheat,overload,
Dimension(CM)	3U:60.5x58.5x20cm
Net Weight	27KGS
Gross Weight	30KGS

- This amplifier is noise free. It will increase the quality of your work. Excellent circuit type class AB. It can make more distortion and better sound. Integrate protect impact function of the power soft-start,DC output protect function, longtime over-heat protect function, and turn on delay function. It can speedy protect the circuit when the amplifier short circuit and over loading.
 - Best suited for applications like Line Array, Small Sound Setup
 - High Processing Power
 - Longer Life
 - Display For Easy Configuration
 - Low Maintenance
 - Made For Indian Conditions
- In order to protect your amplifier from malfunctioning, please ensure proper voltage and frequency while using on Gensets & Direct Electricity Outlet.



ATI 901

DJ AMPLIFIER

MODEL	ATI 901
4 OHMS EIA 1kHz 1%THD	900W
8 OHMS EIA 1kHz 1%THD	600W
8 OHMS BRIDGE	1800W
DISTORTION(SMPTE-1M)	<0.1%
S/N RATIO	>95Db
DAMPING FACTOR	>450
CLASS	AB
EIA Rack Space	2U
Dim.(W X H X D)mm	482*88*360
Weight (in kgs)	23Kgs

- > 900+900W @ 4 Ohms
- > LOADED WITH VOICE SUGAR TECHNOLOGY
- > DUAL CHANNEL CROSSOVERS
- > BEST IN CLASS 2U AMPLIFIER
- > HIGH RELIABILITY
- > SPECIALLY DESIGNED FOR INDIAN MARKETS



ATI12



ATI18



ATI20



ATI30



ATI40

ATI SERIES AUDIOMETAL

Model	Ati 12	Ati 18	Ati 20	Ati 30	Ati 40
8Ω stereo power	900w x2	1250w x2	1450 w x2	1600w x2	1800w x2
4Ω stereo power	1275w x2	1725w x2	2025 w x2	2400wx2	2700w x2
2Ω stereo powe	1700w x2	2300w x2	2700 w x2	3600wx2	
8Ω Bridge Mono power	2550w	3450w	4050w	4800w	5400w
4Ω Bridge Mono power	3400w	4600w	5400w	6400w	7200w
Frequency response	20HZ-20KHZ+/-0.5dB				
Signal noise rate	>80dB	>80dB	>80dB	>80dB	>80dB
THD+N(8OHM 1KHZ IN 1/4 OUTPUT)	<0.05%	<0.05%	<0.05%	<0.05%	<0.05%
Damping Factor(8 Ohm 1 K)	>800	>800	>800	>800	>800
Slew Rate	>20V/us	>20V/us	>20V/us	>20V/us	>20V/us
Input Sensitivity	0.775v/1.0v/1.4v				
Output topology	Class H				
Input connectors(per ch.)	3-pin XLR,electronically balanced				
Link connectors(per ch.)	XLR,3 pin male				
Input Impedance	20KΩBALANCED -10KΩUNBALANCED				
Amplifier Protection	Protection of short circuit, open circuit,overheat,overload,DC etc.				
Dimension(CM)	3U:67.5x57x21.5cm				
Net Weight	36kgs	40kgs	40kgs	42kgs	44kgs
Gross Weight	38kgs	41.5kgs	42kgs	44kgs	46kgs

- > Original design in Germany.
- > SMT Circuits for easy repair.
- > Four fans technology for Indian conditions.
- > ATIPRO reliable, quality and support.
- > Easy availability of spares.

In order to protect your amplifier from malfunctioning, please ensure proper voltage and frequency while using on Gensets & Direct Electricity Outlet.



ATI 6



ATI 9

ATI SERIES AUDIOMETAL

Model	ATI 6	ATI 9
8Ω stereo power	600WX2	800WX2
4Ω stereo power	1000Wx2	1200wx2
2Ω stereo powe	1600Wx2	1800wx2
8ΩBridge Mono power	2000w	2400w
4ΩBridge Mono power	3200w	3600w
Frequency response	20HZ-20KHZ	20HZ-20KHZ
Signal noise rate	>80dB	>80dB
THD+N(8OHM 1KHZ IN 1/4 OUTPUT)	<0.05%	<0.05%
Damping Factor(8 Ohm 1 K)	>600	>600
Slew Rate	>20V/us	>20V/us
Input Sensitivity	0.775v/1.0v/1.4v	0.775v/1.0v/1.4v
Output topology	Class AB	Class AB
Input connectors(per ch.)	3-pin XLR,electronically balanced	3-pin XLR,electronically balanced
Link connectors(per ch.)	XLR,3 pin male	XLR,3 pin male
Input Impedance	20KΩBALANCED -10KΩUNBALANCED	20KΩBALANCED -10KΩUNBALANCED
Amplifier Protection	Protection of short circuit,open circuit,overheat,overload,DC etc.	Protection of short circuit,open circuit,overheat,overload,DC etc.

- > Original design in Germany.
- > SMT Circuits for easy repair.
- > Four fans technology for Indian conditions.
- > ATIPRO reliable, quality and support.
- > Easy availability of spares

In order to protect your amplifier from malfunctioning, please ensure proper voltage and frequency while using on Gensets & Direct Electricity Outlet.



ATI-12+



ATI-18+



ATI-20+



ATI-30+



ATI-40+

ATI SERIES DJ AMPLIFIER

Model	ATI12+	ATI18+	ATI20+	ATI30+	ATI40+
8Ω stereo power	2x900W	2x1250W	2x1450W	2x1600W	2x1800W
4Ω stereo power	2x1275W	2x1725W	2x2225W	2x3000W	2x3600W
2Ω stereo power	2x1700W	2x2300W	2x2700W	2x3600W	
8Ω Bridge Mono power	2550W	3450W	4050W	4800W	4800W
4Ω Bridge Mono power	3400W	4600W	5400W	6400W	6400W
Signal Noise Ration(dB)	> 80dB				
THD+N (80HM 1KHZ IN 1/4 OUTPUT)	< 0.05%				
Dampin Factor(80HM 1K)	> 1500	> 1500	> 1500	> 2000	> 2000
Slew Rate	> 20V/us				
Input sensitivity	0.775v/1.0v/1.4v				
Output Circuit	Class H	Class H	Class H+	Class H++	Class H++
Frequency Response(+/-0.1db)	20Hz-20kHz +/-0.5dB				
Input connectors(per ch.)	3-pin XLR,electronically balanced				
Link connectors(per ch.)	XLR, 3 pin male				
Input Impedance	20kΩBALANCED-10kΩUNBALABCE				
Output Connectors	NEUTRIK				
Amplifier Protection	Protection of short circuit,open circuit,overheat,overload,DC,super sonic frequency etc.				
Transport Dimension(CM)	3U:67.5x57x22.5cm				
Net Weight	35kgs	38kgs	40kgs	41kgs	42kgs
Gross Weight	37kgs	42kgs	45kgs	46kgs	47kgs



NEW LAUNCH ATi-50+

Model	ATi50+
8Ω stereo power	2x2100W
4Ω stereo power	2x4200W
8Ω Bridge Mono power	5200W
4Ω Bridge Mono power	8800W
Frequency Response(+/-0.1db)	20Hz-20kHz +/-0.5dB
THD+N (80HM 1KHZ IN 1/4 OUTPUT)	< 0.08%
Slew Rate	> 30V/us
Signal Noise Ration(dB)	> 110dB
Dampin Factor(80HM 1K)	> 2000
Input connectors(per ch.)	3-pin XLR,electronically balanced
Link connectors(per ch.)	XLR, 3 pin male
Output Circuit	Class H+++
Input Impedance	20kΩBALANCED-10kΩUNBALANCED
Output Socket	Speak on Connectors(NEUTRIK)
Protection	Protection of short circuit,open
Power Rquirement	200-240v-50-60Hz
Transpourt Dimension(CM)	69.5X54X24.5
Net Weight	47KGS
Gross Weight	51KGS



HD 801



HD 1601



HD 1201

HD SERIES

Model	HD801	HD1201	HD1601
8Ω stereo power	2x1050W	2x1350W	2x1700W
4Ω stereo power	2x1550W	2x1850W	2x2250W
2Ω stereo power	2x1600W	2x2150W	2x2700W
8Ω Bridge Mono power	3400W	3700W	4200W
4Ω Bridge Mono power	4200W	4800W	5200W
Max Peak Output Voltage	132v	132v	138v
Frequency Response(+o/-0.3dB,1W/8Ω)	20Hz-20kHz -3dB@150kHz		
THD+N (Rated power,4Ω/1KHZ)	< 0.1%		
Dampin Factor(8OHM 1K)	> 800		
Input sensitivity	0.775v		
Input Impedance	> 20kΩ ? 10k		
Output Circuit	H		
Input connectors(per ch.)	3-pin XLR,electronically balanced		
Link connectors(per ch.)	XLR, 3 pin male		
Cooling	Two rear panel variable speed DC fans,filters detectable without tools		
LED Indicators(per ch.)	Clip/limt,Signal,temp/DC,Aactive		
Transport Dimension(CM)	3U:67.5x57x19cm		
Net Weight	35kgs	38kgs	40kgs
Gross Weight	37kgs	40kgs	42kgs



XD 4000



XD 5600



XD 7000

XD SERIES

Model	XD4000	XD5600	XD7000
8Ω stereo power	2x1050w	2x1350w	2X1700W
4Ω stereo power	2x1550w	2x1850w	2X2250W
2Ω stereo power	2X1600W	2X2150W	
8Ω bridge Mono power	3400w	3700w	4200W *
4Ω bridge Mono power	4200W	4800W	5200W
Max Peak Output Voltage	132v	132v	138V
Frequency response (+/-0.3dB,1W/8Ω)	20HZ-20KHZ -3dB@150kHz	20HZ-20KHZ -3dB@150kHz	
THD+N(RATED POWER,4Ω/1Khz)	<0.1%	<0.1%	<0.1%
Damping Factor	>800	>800	>1000
Standard Input Sensitivity(rate power of 8Ω)	0.775v	0.775v	0.775v
Output Impedance(balanced and unbalanced)	>20kΩ>10k	>20kΩ>10k	>20kΩ>10k
Class	H	H	H
Input connectors(per ch.)	3-pin XLR,electronically balanced		
Link connectors(per ch.)	XLR,3 pin male		
Cooling	Two rear panel variable speed DC fans,filters detachable without tools		
LED Indicators(per channel)	Clip/Limit,Signal,Temp/DC,Active		
Dimensions	3U:67.5x57x19cm		
NET Weight	35KGS	41KGS	43KGS
GROSS weight	37KGS	43KGS	45KGS

- > Light weight for easy transportation.
- > Refreshed design
- > Less maintenance cost.
- > Easy availability of spares.
- > Various outdoor and indoor applications.

In order to protect your amplifier from malfunctioning, please ensure proper voltage and frequency while using on Gensets & Direct Electricity Outlet .

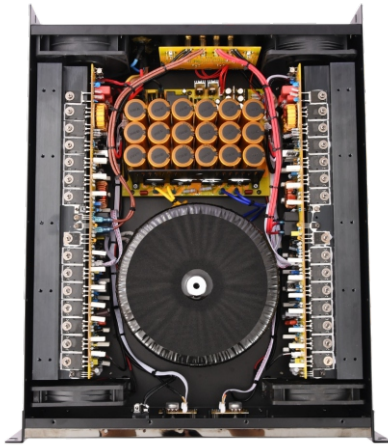


ATI-4800 **AUDIOMETAL**

Model	ATi4800
8Ω stereo power	4x800W
4Ω stereo power	4x1200W
Frequency response	20HZ-20KHZ+/-0.5dB
THD+N(20Hz-20KHz)%	<0.08%
Slew Rate	30V/μs
Signal Noise Ration(dB)	>110dB
Damping Factor(8Ω,20Hz-1KHz)	350
Voltage Gain(rated power@8Ω)	39.6dB
Input connectors(per ch.)	3-pin XLR,electronically balanced
Link connectors(per ch.)	XLR,3 pin male
Input Impedance	20KΩBALANCED -10KΩUNBALANCED
Fans	Two variable speed fans,rear-to-front air flow
Indicators	Front:AC switch,Ch1 and Ch2 gain knobs;Rear:Stereo/Parallel/Bridge switch
Amplifier Protection	short circuit,thermal,over load,clip limiter,DC volage,soft start,ultrasonic and RF protection
Dimension(CM)	69x60x16cm
Net Weight(KGS)	28
Gross Weight(KGS)	32

- > Light weight for easy transportation.
- > Refreshed design
- > Less maintenance cost.
- > Easy availability of spares.
- > Various outdoor and indoor applications.

In order to protect your amplifier from malfunctioning, please ensure proper voltage and frequency while using on Gensets & Direct Electricity Outlet .



ATI 10000+ AUDIOMETAL

Model	ATi10000
8Ω stereo power	2x2500W
4Ω stereo power	2x4500W
2Ω stereo power	2x5000W
8Ω Bridge Mono power	8000W
4Ω Bridge Mono power	10000W
Frequency Response(+/-0.1db)	20Hz-20kHz +/-0.5dB
THD+N (80HM 1KHZ IN 1/4 OUTPUT)	< 0.08%
Slew Rate	> 10 SV/us
Signal Noise Ration(dB)	> 110dB
Dampin Factor(80HM 1K)	> 2000
Input connectors(per ch.)	3-pin XLR,electronically balanced
Link connectors(per ch.)	XLR, 3 pin male
Output Circuit	Class TD
Input Impedance	20kΩBALANCED-10kΩUNBALANCED
Output Socket	Speak on Connectors(NEUTRIK)
Protection	Protection of short circuit,open circuit,overheat,overload,DC,super sonic frequency etc.
Power Rquirement	200-240v-50-60Hz
Transport Dimension(CM)	69.5X54X24.5
Net Weight	46KGS
Gross Weight	50KGS



ATI 15000



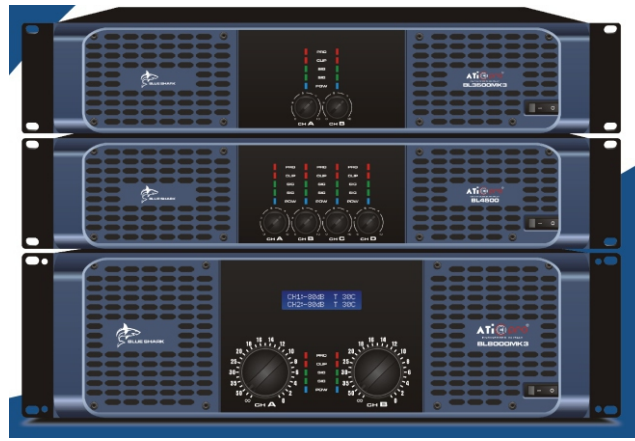
ATI 25000



ATI 20000

Model	ATi-15000	ATi-20000	ATi-25000
8Ω stereo power	4x1500w	4x1800w	4x2200w
4Ω stereo power	4x2250w	4x2700w	4x3000w
2Ω stereo power	4x3000w	4x3600w	4x4000w
8Ω Bridge Mono power	2x4000w	2x4600w	2x5200w
4Ω Bridge Mono power	2x6000w	2x6800w	2x7600w
Frequency Response(+/-0.db)	20Hz-20KHz+-0.5dB		
THD+N(80HM 1KHZIN1/4 OUTPUT)	<0.5%,1Kz,1/3 Power 8ΩRated		
Slew Rate	>105SV/us		
Signal Noise Ration(dB)	110dB		
Dampin Factor(80HM 1K)	>2000		
Input connectorSiper ch.)	3-pin XLR,electroccally balanced		
Link connectorS(perch.)	XLR,3 PIN MALE		
Output Circuit	CLASS TD		
Input Impedance	20kΩBALANCED-0kΩBALANCED		
Output Socket	Speak on Connectors		
Protection	Protection of short cicuit,open circuit,overheat,overload,DC,super sonic frequeny etc.		
Power Requirement	200-240v 50-60Hz		
Transport Dimension(cM)	73.7x55.2x23.5cm		
Net Weight	36.5kgs	38.5kgs	46.5kgs
Gross Weight	40kgs	42gs	50kgs

BLUE SHARK SERIES



NEW LAUNCH BL-SERIES

Characterise

- > Combines with 3 degree class H high efficient circuit, supply upto 8 Ohms 2x1700w (4 Ohms 2x3300W; 2 Ohms 3x5500W) strong power
- > Perfect circuit protection design, equip with over-heat protection pressure limit protection, over current protection, over-load protection.
- > Combine with 12 (1800uf) capacitance of high effective and high quality. The low frequency less than 20Hz.

Models	BL3500MK3	BL4500MK3	BL3500	BL4500	BL5500	BL8000MK3	BL10000MK3	BL12000MK3	BL16000MK3	BL18000MK3
Power @ 8 Ohms	2x1000W	2x1200W	4x1350W	4x1500W	4x1700W	2x2000W	2x1500W	2x1700W	2x2000W	2x2500W
Power @ 4 Ohms	2x1600W	2x2000W	4x2400W	4x2800W	4x3300W	2x4000W	2x2800W	2x3300W	2x4000W	2x4500W
Power @ 2 Ohms	2x2000W	2x2400W	4x3500W	4x4500W	4x5500W	2x6000W	2x4500W	2x5500W	2x6000W	2x6500W
Bridged @ 8 Ohms	2000W	2400W	2700W	3000W	3400W	4000W	3000W	3400W	4000W	5000W
Bridged @ 4 Ohms	3200W	4000W	4800W	5600W	6600W	8000W	5600W	6600W	8000W	9000W



DJ AMPLIFIER

DIET SERIES 2

Model	SP2.8K	SP3.6K	SP6.0K	SP6.8K	SP7.6K	SP9.0K	SP9.2K	SP10.4K
8 Ohm Stereo Power	2x900w	2x1100w	2x1800w	2x2100w	2x2400w	2x2800w	4x1500w	4x1800w
4 Ohm Stereo Power	2x1400w	2x1800w	2x3000w	2x3600w	2x3800w	2x4500w	4x2300w	4x2800w
2 Ohm Stereo Power	2x1750w	2x2000w	2x3800w	2x4200w	2x5000w	2x5500w	NA	NA
8 Ohm Bridge Power	2800w	3600w	6000w	7200w	7600w	9000w	2x4600w	2x5200w
4 Ohm Bridge Power	3500w	4000w	7600w	8400w	10000w	NA	NA	NA
Net Weight	5.5Kgs	5.7Kgs	6.5Kgs	6.8Kgs	8Kgs	8.3Kgs	10Kgs	10.2Kgs
Product Dimension (WxLxH)	482x228x44mm				482x280x44mm		482x380x44mm	
Input Impedance	Balanced/ Unbalanced		>20kOhm/>10kOhm					
THD+N (typical)	8Ohm1kHz, 1/8 rated power		<0.035%					
Frequency Respon	20Hz-20kHz, 8Ohm1kHz, 1/8 rated p		<+/-0.5dB					
Signal to Noise Ratio			>106dB					
Damping Factor			>600					
Conversion Rate			>20V/us					
Input Sensitivity			32dB, 1V, 0.775V					
Impedance			>=2Ohm					
Wind Path			The fan with temperature control and variable speed, airflow from front to rear					
Circuit Protection			Soft start, DC, infrasonic frequency, High-frequency, overheat, short-circuit, mute, on/off					

- > **Light weight for easy transportation.**
 - > **Refreshed design**
 - > **Less maintenance cost. Easy availability of spares.**
- In order to protect your amplifier from malfunctioning, please ensure proper voltage and frequency while using on Gensets & Direct Electricity Outlet.



NEW LAUNCH DQ-SERIES

Characterise

- 1U height of 11" standard cabinet, compact size, lightweight and portable.
- ClassD power module with fixed switching frequency.
- The soft start LLC resonant SMPS module.
- The active power factor correction (PFC), can be stable working in full voltage range (90-264V).
- The efficient speaker EMF absorption system.
- The unique peak limiter and ripple cancellation network.
- The fan with temperature control and variable speed, airflow from front to rear.
- Connection mode selection (stereo / parallel / bridge).
- Input sensitivity switch (0.775v/1v/32dB).
- The whole circuit protection, including: soft start, DC, infrasonic frequency, high-frequency, overheat, short circuit, mute on / off.
- The low frequency powerful, depth is extremely low, mid high frequency with high transparent, clear and sweet.
- The integration design of the power amplifier module and power supply module, more than 85% components with mechanical automation operation, to ensure the consistency of the product.

Model	DQ2.18	DQ2.21	DQ2.25	DQ2.30	DQ4.15
8Ωstereo power	1800W x2	2100W x2	2500W x2	3000W x2	1500W x4
4Ωstereo power	3000W x2	3600W x2	4000W x2	4700W x2	2400W x4
2Ωstereo power	3900W x2	4200W x2	5200W x2	5700W x2	N/A
8ΩBridge power	3000W x1	7200W x1	8000W x1	9400W x1	4800W x2
4ΩBridge power	7800W x1	8400W x1	10400W x1	11400W x1	N/A
Product dimension (WxLxH)	483x251x44 mm		483x308x44mm		483x403x44 mm
Package dimension (WxLxH)	530x360x100 mm		523x445x80 mm		545x525x80 mm
Net weight :	6.5kg	6.8kg	8.0kg	8.3kg	10kg
Gross weight :	7.7kg	8.0kg	9.4kg	9.7kg	11.6kg



NEW LAUNCH DX-SERIES

Characterise

- 1U height of 11" standard cabinet, compact size, lightweight and portable.
- ClassD power module with fixed switching frequency.
- The soft start LLC resonant SMPS module.
- The active power factor correction (PFC), can be stable working in full voltage range (90-264V).
- The efficient speaker EMF absorption system.
- The unique peak limiter and ripple cancellation network.
- The fan with temperature control and variable speed, airflow from front to rear.
- Connection mode selection (stereo / parallel / bridge).
- Input sensitivity switch (0.775v/1v/32dB).
- The whole circuit protection, including: soft start, DC, infrasonic frequency, high-frequency, overheat, short circuit, mute on / off.
- The low frequency powerful, depth is extremely low, mid high frequency with high transparent, clear and sweet.
- The integration design of the power amplifier module and power supply module, more than 85% components with mechanical automation operation, to ensure the consistency of the product.

Model	DX2500	DX2650	DX2800	DX2.10	DX4500	DX4650	DX4800	DX4.10
8Ω stereo power	500W x2	650W x2	800W x2	1000W x2	500W x4	650W x4	800W x4	1000W x4
4Ω stereo power	800W x2	1050W x2	1300W x2	1650W x2	800W x4	1050W x4	1300W x4	1650W x4
2Ω stereo power	1100W x2	1400W x2	1750W x2	2100W x2				
8Ω Bridge power	1600W x1	2100W x1	2600W x1	3300W x1	1600W x2	2100W x2	2600W x2	3300W x2
4Ω Bridge power	2200W x1	2800W x1	3500W x1	4200W x1				
Product dimension	483x251x45 mm							
(W x L x H)								
Package dimension	530x360x100 mm							
(W x L x H)								
Net weight :	4.2kg	4.4kg	4.6kg	4.9kg	5.2kg	5.5kg	5.8kg	6.5kg
Gross weight :	5.4kg	5.6kg	5.8kg	6.1kg	6.4kg	6.7kg	7.0kg	7.5kg



NEW LAUNCH DSP-SERIES

Characterise

- ▶ Built-in Analog digital signal processor, 1U Lightweight with strong power output
- ▶ Audio signals can be processed accurately by Route, Gain, Phase, Mute, PEQ, Delay, Crossover, Compressor and Limiter;
- ▶ FIR filter, a variety of ports USB, RS485, Ethernet (network debugging);
- ▶ Adopt advanced Class D power amplifier module, the efficiency is above 92%, with extremely high efficiency and reliability;
- ▶ The power supply adopts an efficient and stable R-SMPS power supply system, and integrates an active power factor correction circuit (PFC), which can adjust the current waveform according to the AC voltage waveform and adapt to a wide range of voltages (90-264V) operation, while enabling a single standard circuit breaker to carry more power;
- ▶ Unique peak clipping limiter and ripple elimination network;
- ▶ The perfect protection system can effectively reduce the damage caused by improper use and further improve the reliability of the device.

Model	DSP2.50	DSP2.80	DSP2.100	DSP2.130	DSP2.180	DSP2.210	DSP2.240	DSP2.280	DSP4.50	DSP4.80	DSP4.100	DSP4.130	DSP4.150	DSP4.180	
Channel	2	2	2	2	2	2	2	2	4	4	4	4	4	4	
Output Power	8Ω Stereo	2 x 500W	800W x2	1000W x2	1300W x2	1800W x2	2100W x2	2400W x2	2800W x2	500W x4	800W x4	1000W x4	1300W x4	1500W x4	1800W x4
	4Ω Stereo	2 x 580W	1300W x2	1650W x2	2100W x2	3000W x2	3400W x2	3800W x2	4500W x2	800W x4	1300W x4	1650W x4	2100W x4	2300W x4	2800W x4
	2Ω Stereo	2 x 800W	1750W x2	2100W x2	2500W x2	3600W x2	4000W x2	5000W x2	5500W x2						
	8Ω Bridge	1 x 1160W	2600W x1	3300W x1	4200W x1	6000W x1	6800W x1	7600W x1	9000W x1	1600W x2	2600W x2	3300W x2	4200W x2	4600W x2	5200W x2
4Ω Bridge	1 x 1600W	3500W x1	4200W x1	5000W x1	7200W x1	8000W x1	10000W x1	11000W x1							
Product dimension (W x L x H)	483X308X45MM						483*363*45MM			483X308X45MM				483*428*45MM	
Net weight:	4.7KG	5.1KG	5.4KG	5.5KG	7KG	7.3KG	8.5KG	8.8KG	5.7KG	6.3KG	7KG	7.2KG	10.5KG	10.8KG	

PA SERIES DJ AMPLIFIER



AUDIOMETAL

PA-400 USB

POWER OUTPUT : 40W Max, 30W RMS @ 10% THD
 INPUT CHANNEL : 1 X MIC 0,65Mv/4,7 Kohms
 1 X AUX 100MV/470 Kohms
 FREQ RESPONSE : 100-15000HZ +-3DB
 SIGNAL TO NOISE RATIO: 60 DB
 SIREN : AMBULANCE/POLICE/FIRE
 USB : BT/MP3
 SPEAKER OUTPUT : 4/8/16 OHMS & 100V
 POWER SUPPLY : DC - 12V

MOBILE AMPLIFIERS

PA SERIES DJ AMPLIFIER



AUDIOMETAL

ATI-45

POWER OUTPUT : 45W Max, 40W RMS @ 10% THD
 INPUT CHANNEL : 2 X MIC 0,65Mv/4,7 Kohms
 1 X AUX 100MV/470 Kohms
 FREQ RESPONSE : 100-15000HZ +-3DB
 SIGNAL TO NOISE RATIO: 60 DB
 USB : BT/MP3
 SPEAKER OUTPUT : 4/8/16 OHMS & 100V
 POWER SUPPLY : DC - 12V

MEDIUM WATTAGE

PA SERIES DJ AMPLIFIER



AUDIOMETAL

ATI-65

POWER OUTPUT : 65W Max.
 OUTPUT REGULATION : ≤ 2 dB, no load to full load at 1kHz
 INPUT CHANNEL : 3 x mic 0.65mV/4.7 Ω
 1 x Aux 100mV/470 k Ω
 FREQ RESPONSE : 100-15,000 Hz +-3dB
 SPEAKER OUTPUT : 4,8,16 Ω 70,100V
 POWER SUPPLY : 220/240V AC ,50-60Hz 12V DC
 POWER CONSUMPTION : 80 VA
 WEIGHT : 7KG

MEDIUM WATTAGE

MEDIUM WATTAGE

PA SERIES DJ AMPLIFIER



AUDIOMETAL

ATI-85

POWER OUTPUT : 85W Max.
 OUTPUT REGULATION : ≤ 2 dB, no load to full load at 1kHz
 INPUT CHANNEL : 4 x mic 0.65mV/4.7 Ω
 1 x Aux 100mV/470 k Ω
 FREQ RESPONSE : 100-15,000 Hz +-3dB
 SPEAKER OUTPUT : 4,8,16 Ω 70,100V
 POWER SUPPLY : 220/240V AC ,50-60Hz 12V DC
 POWER CONSUMPTION : 100 VA
 WEIGHT : 8.8KG

MEDIUM WATTAGE

PA SERIES DJ AMPLIFIER



AUDIOMETAL

ATI-125 ECO

POWER OUTPUT : 125W Max
 INPUT CHANNEL : 5 X MIC 0,65Mv/4,7 Kohms
 2 X AUX 100MV/470 Kohms
 FREQ RESPONSE : 100-15000HZ +-3DB
 SIGNAL TO NOISE RATIO: 60 DB
 USB : BT/MP3
 SPEAKER OUTPUT : 4/8 OHMS & 70/100V
 OUTPUT REGULATION : LESS THAN 2DB @ 1KHZ
 POWER SUPPLY : AC: 220V - 240V @ 50/60Hz, DC - 24V

MEDIUM WATTAGE

PA SERIES DJ AMPLIFIER



AUDIOMETAL

ATI-150

POWER OUTPUT : 150W Max.
 OUTPUT REGULATION : ≤ 2 dB, no load to full load at 1kHz
 INPUT CHANNEL : 5 x mic 0.65mV/4.7 Ω
 2 x Aux 100mV/470 k Ω
 FREQ RESPONSE : 100-15,000 Hz +-3dB
 SPEAKER OUTPUT : 4,8,16 Ω 70,100V
 POWER SUPPLY : 220/240V AC ,50-60Hz 12V DC
 POWER CONSUMPTION : 180 VA
 WEIGHT : 11.3KG

INDIA'S MOST POWERFUL PA AMPLIFIER

PA SERIES DJ AMPLIFIER



AUDIOMETAL

ATI-60U_{HD+}

POWER OUTPUT : 85W Max.
2U Rack Mounting
INPUT CHANNEL : 3 mic & 2 Output
SPEAKER OUTPUT : 4Ω, 8Ω, 70V, 100V
POWER SUPPLY : 220/240V AC ,50-60Hz 24V DC
POWER CONSUMPTION : 220 VA

INSTALLATION 2 CHANNEL

PA SERIES DJ AMPLIFIER



AUDIOMETAL

ATI-200

POWER OUTPUT : 200W Max.
OUTPUT REGULATION : ≤ 2 dB, no load to full load at 1kHz
INPUT CHANNEL : 6 x mic 0.65mV/4.7Ω
2 x Aux 100mV/470 kΩ
FREQ RESPONSE : 100-15,000 Hz +-3dB
SPEAKER OUTPUT : 4,8,16Ω 70,100V
POWER SUPPLY : 220/240V AC ,50-60Hz 24V DC
POWER CONSUMPTION : 220 VA
WEIGHT : 13KG

MEDIUM WATTAGE

PA SERIES DJ AMPLIFIER



AUDIOMETAL

ATI-100U_{HD+}

POWER OUTPUT : 150W Max.
19" Rack Mounting
INPUT CHANNEL : 3 mic & 2 Output
SPEAKER OUTPUT : 4Ω, 8Ω, 70V, 100V
POWER SUPPLY : 220/240V AC ,50-60Hz 24V DC
POWER CONSUMPTION : 220 VA

INSTALLATION 2 CHANNEL

HIGH WATTAGE

PA SERIES DJ AMPLIFIER



AUDIOMETAL

ATI-300U_{HD+}

POWER OUTPUT : 320W RMS (360 Max)
INPUT CHANNEL : 6 x mic, 3 AUX, 1 Line-in
FREQ RESPONSE : 55Hz - 14.8 KHz
SPEAKER OUTPUT : 4,8Ω 70,100V
POWER SUPPLY : 230V AC ,50Hz 24V DC
S/N Ratio: 65dB
WEIGHT : 18KG

HIGH WATTAGE

PA SERIES DJ AMPLIFIER



AUDIOMETAL

ATI-300 FX

POWER OUTPUT : 300W Max
INPUT CHANNEL : 6 X MIC 0.65Mv/4.7 Kohms
2 X AUX 100MV/470 Kohms
FREQ RESPONSE : 100-15000HZ +-3DB
SIGNAL TO NOISE RATIO: 60 DB
USB : BT/MP3
SPEAKER OUTPUT : 4/8 OHMS & 70/100V
OUTPUT REGULATION : LESS THAN 2DB @ 1KHZ
POWER SUPPLY : AC: 220V - 240V @ 50/60Hz, DC - 24V

HIGH WATTAGE



AUDIOMETAL

ATI-350 FX

POWER OUTPUT : 350W Max
INPUT CHANNEL : 6 X MIC 0.65Mv/4.7 Kohms
2 X AUX 100MV/470 Kohms
FREQ RESPONSE : 100-15000HZ +-3DB
SIGNAL TO NOISE RATIO: 60 DB
USB : BT/MP3
SPEAKER OUTPUT : 4/8 OHMS & 70/100V
OUTPUT REGULATION : LESS THAN 2DB @ 1KHZ
POWER SUPPLY : AC: 220V - 240V @ 50/60Hz, DC - 24V

INDIA'S MOST POWERFUL PA AMPLIFIER

INDIA'S FIRST 18", 5' VOICE COIL
SPEAKER WITH CARBON CONE

PA SERIES DJ AMPLIFIER



AUDIOMETAL

ATI-400 FX

POWER OUTPUT : 400W Max
INPUT CHANNEL : 6 X MIC 0.65mV/4.7 Kohms
2 X AUX 100mV/470 Kohms
FREQ RESPONSE : 100-15000Hz +-3dB
SIGNAL TO NOISE RATIO: 60 DB
USB : BT/MP3
SPEAKER OUTPUT : 4/8 OHMS & 70/100V
OUTPUT REGULATION : LESS THAN 2DB @ 1KHZ
POWER SUPPLY : AC: 220V - 240V @ 50/60Hz, DC - 24V

HIGH WATTAGE

PA SERIES DJ AMPLIFIER



AUDIOMETAL

ATI-500U

POWER OUTPUT : 520W RMS (650 Max)
INPUT CHANNEL : 6 x mic, 3 AUX, 1 Line-in
FREQ RESPONSE : 55Hz - 15 KHz
SPEAKER OUTPUT : 2,4Ω 70,100V
POWER SUPPLY : 230V AC ,50Hz 24V DC
S/N Ratio: 62dB
WEIGHT : 19.5KG

HIGH WATTAGE

PA SERIES DJ AMPLIFIER



AUDIOMETAL

ATI-601

POWER OUTPUT : 650W Max.
OUTPUT REGULATION : ≤ 2 dB, no load to full load at 1kHz
INPUT CHANNEL : 200mV @100KΩ
FREQ RESPONSE : 50-15,000 Hz +-3dB
SPEAKER OUTPUT : 2,4Ω/ 70,100V
POWER SUPPLY : AC 220-240 VOLT/50-60Hz
POWER CONSUMPTION : 220 VA
WEIGHT : 23KG

BOOSTER

BOOSTER

PA SERIES DJ AMPLIFIER



AUDIOMETAL

ATI-650 USB

POWER OUTPUT : 650W Max.
OUTPUT REGULATION : ≤ 2 dB, no load to full load at 1kHz
INPUT CHANNEL : 200mV @100KΩ
FREQ RESPONSE : 50-15,000 Hz +-3dB
SPEAKER OUTPUT : 2,4Ω/ 70,100V
POWER SUPPLY : AC 220-240 VOLT/50-60Hz
POWER CONSUMPTION : 220 VA
WEIGHT : 23KG

HIGH WATTAGE

PA SERIES DJ AMPLIFIER



AUDIOMETAL

ATI-750

POWER OUTPUT : 750W RMS (1110W Max)
OUTPUT : 200mV PRE OUT 1 LINE OUT
INPUT CHANNEL : 1 MIC, 2 AUX, 1 LINE IN
FREQ RESPONSE : 55 HZ - 15 KHZ
SPEAKER OUTPUT : 2Ω, 4Ω, 70V, 100V
POWER SUPPLY : AC 230V/50Hz
WEIGHT : 26KGs

HIGH WATTAGE

PA SERIES DJ AMPLIFIER



AUDIOMETAL

ATI-750U

POWER OUTPUT : 750W RMS (1110W Max)
OUTPUT : 200mV PRE OUT 1 LINE OUT
INPUT CHANNEL : 1 MIC, 2 AUX, 1 LINE IN
FREQ RESPONSE : 55 HZ - 15 KHZ
SPEAKER OUTPUT : 2Ω, 4Ω, 70V, 100V
POWER SUPPLY : AC 230V/50Hz
WEIGHT : 26KGs

INDIA'S MOST POWERFUL PA AMPLIFIER

PA SERIES DJ AMPLIFIER



AUDIOMETAL

ATI-1001

POWER OUTPUT : 1000W Max.
OUTPUT REGULATION : ≤ 2 dB @ 1kHz
INPUT CHANNEL : 200mV @100K Ω
FREQ RESPONSE : 50-15,000 Hz +3dB
SPEAKER OUTPUT : 2,4 Ω / 70,100V
POWER SUPPLY : AC 220-240 VOLT/50-60Hz
POWER CONSUMPTION : 220 VA

PA SERIES DJ AMPLIFIER



AUDIOMETAL

ATI-1201

POWER OUTPUT : 1200W Max.
OUTPUT REGULATION : ≤ 2 dB, no load to full load at 1kHz
INPUT CHANNEL : 200mV @100K Ω , 1V @10K Ω
FREQ RESPONSE : 50-15,000 Hz +3dB
SPEAKER OUTPUT : 2,4 Ω / 70,100V
POWER SUPPLY : AC 220-240 VOLT/50-60Hz
POWER CONSUMPTION : 220 VA
PROTECTION DETAILS : Fuse Protection, Thermal Protection
Circuit Breaker, Relay Protection

BOOSTER

PA SERIES DJ AMPLIFIER



AUDIOMETAL

ATI-1201 PLATINUM

POWER OUTPUT : 1200W Max.
OUTPUT REGULATION : ≤ 2 dB, no load to full load at 1kHz
INPUT CHANNEL : 200mV @100K Ω , 1V @10K Ω
FREQ RESPONSE : 50-15,000 Hz +3dB
SPEAKER OUTPUT : 2,4 Ω / 70,100V
POWER SUPPLY : AC 220-240 VOLT/50-60Hz
POWER CONSUMPTION : 220 VA
PROTECTION DETAILS : Fuse Protection, Thermal Protection
Circuit Breaker, Relay Protection

BOOSTER

INSTALLATION 2 CHANNEL

BOOSTER

PA SERIES DJ AMPLIFIER



AUDIOMETAL

ATI-1212_{HD}

POWER OUTPUT : 1200W Max.
OUTPUT REGULATION : ≤ 2 dB, no load to full load at 1kHz
INPUT CHANNEL : 200mV @100K Ω , 1V @10K Ω
FREQ RESPONSE : 50-15,000 Hz +3dB
SPEAKER OUTPUT : 2,4 Ω / 70,100V
POWER SUPPLY : AC 220-240 VOLT/50-60Hz
POWER CONSUMPTION : 220 VA
PROTECTION DETAILS : Fuse Protection, Thermal Protection
Circuit Breaker, Relay Protection

PA SERIES DJ AMPLIFIER

HIGH WATTAGE



AUDIOMETAL

ATI-1250^{*}/1250U

POWER OUTPUT : 1250W RM (1700W MAX)
OUTPUT: 200mV PRE OUT 1V LINE OUT
INPUT CHANNEL : 1 MIC, 2 AUX, 1 LINE IN
FREQ RESPONSE : 55 HZ - 15 KHZ
SPEAKER OUTPUT : 2 Ω , 4 Ω , 70V, 100V
POWER SUPPLY : AC 230V/50Hz
WEIGHT : 31 Kgs

^{*} 1250 COMES WITHOUT USB

PA SERIES DJ AMPLIFIER



AUDIOMETAL

ATI-1202

POWER OUTPUT : 1200W Max.
OUTPUT REGULATION : ≤ 2 dB, no load to full load at 1kHz
INPUT CHANNEL : 200mV @100K Ω , 1V @10K Ω
FREQ RESPONSE : 50-15,000 Hz +3dB
SPEAKER OUTPUT : 2,4 Ω / 70,100V
POWER SUPPLY : AC 220-240 VOLT/50-60Hz
POWER CONSUMPTION : 220 VA
PROTECTION DETAILS : Fuse Protection, Thermal Protection
Circuit Breaker, Relay Protection

INDIA'S MOST POWERFUL PA AMPLIFIER

PA SERIES DJ AMPLIFIER



AUDIOMETAL

ATI-1601
PLATINUM

POWER OUTPUT : 1600W Max.
OUTPUT REGULATION : ≤ 2 dB, no load to full load at 1kHz
INPUT : AUX IN, LINE IN
FREQ RESPONSE : 20 Hz-20 KHz
OUTPUT : SPEAKON, BINDING POST
DAMPING FACTOR : >300
POWER CONSUMPTION : 220 VA

BOOSTER

PA SERIES DJ AMPLIFIER



AUDIOMETAL

ATI-1616 ULTRA

POWER OUTPUT : 1600W Max.
OUTPUT REGULATION : ≤ 2 dB, no load to full load at 1kHz
INPUT CHANNEL : 200mV @100K Ω , 1V @10K Ω
FREQ RESPONSE : 50-15,000 Hz \pm -3dB
SPEAKER OUTPUT : 2,4 Ω / 70,100V
POWER SUPPLY : AC 220-240 VOLT/50-60Hz
POWER CONSUMPTION : 220 VA
PROTECTION DETAILS : Fuse Protection, Thermal Protection
Circuit Breaker, Relay Protection

BOOSTER

PA SERIES DJ AMPLIFIER



AUDIOMETAL

ATI-2K2M

POWER OUTPUT : 2200W Max.
OUTPUT REGULATION : ≤ 2 dB, no load to full load at 1kHz
INPUT CHANNEL : 200mV @100K Ω 1V @ 10K Ω
FREQ RESPONSE : 50-15,000 Hz \pm -3dB
SPEAKER OUTPUT : 2,4 Ω / 70,100V
POWER SUPPLY : AC 220-240 VOLT/50-60Hz
POWER CONSUMPTION : 220 VA

INDIAN DUAL ZONE

PA SERIES DJ AMPLIFIER

INDIAN DUAL ZONE



AUDIOMETAL

ATI-3K2M

POWER OUTPUT : 3600W Max.
OUTPUT REGULATION : ≤ 2 dB, no load to full load at 1kHz
INPUT CHANNEL : 200mV @100K Ω 1V @ 10K Ω
FREQ RESPONSE : 50-15,000 Hz \pm -3dB
SPEAKER OUTPUT : 2,4 Ω / 70,100V
POWER SUPPLY : AC 220-240 VOLT/50-60Hz
POWER CONSUMPTION : 220 VA

PA SERIES DJ AMPLIFIER

INDIAN DUAL ZONE



AUDIOMETAL

ATI-4K2M

POWER OUTPUT : 4200W Max.
OUTPUT REGULATION : ≤ 2 dB, no load to full load at 1kHz
INPUT CHANNEL : 200mV @100K Ω , 1V @ 10K Ω
FREQ RESPONSE : 100-15,000 Hz \pm -3dB
SPEAKER OUTPUT : 4,8,16 Ω 70,100V
POWER SUPPLY : 230/240V AC ,50-60Hz 12V DC
POWER CONSUMPTION : 180 VA
COOLING: 4 X AIR FORCED COOLING

INDIA'S MOST POWERFUL PA AMPLIFIER



ATI-801

2 ΩEIA 1kHz 1% THD – 1600 W
 4 ΩEIA 1kHz 1% THD – 1200 W
 8 ΩEIA 1kHz 1%THD – 800 W
 8 Ω Bridge Mono – 2200 W
 4 Ω Bridge Mono – 2900 W
 Distortion (SMPTE-1M) – <0.01%
 S/N Ratio – 103 DB
 Damping Factor – >800
 Frequency Response – 20 Hz – 20 KHz
 Class – H
 EIA Rack Space – 3
 Dim.(WXHxD) Mm – 482 X 132 X 483
 Weight (In Kgs) – 34



ATI-1201

2 ΩEIA 1kHz 1% THD – 2500 W
 4 ΩEIA 1kHz 1% THD – 1850 W
 8 ΩEIA 1kHz 1%THD – 1350 W
 8 Ω Bridge Mono – 3700 W
 4 Ω Bridge Mono – 4800 W
 Distortion (SMPTE-1M) – <0.01%
 S/N Ratio – 103 DB
 Damping Factor – >800
 Frequency Response – 20 Hz – 20 KHz
 Class – H
 EIA Rack Space – 3
 Dim.(WXHxD) Mm – 482 X 132 X 483
 Weight (In Kgs) – 41



ATI-1601

2 ΩEIA 1kHz 1% THD- 3000 W
 4 ΩEIA 1kHz 1% THD- 2250 W
 8 ΩEIA 1kHz 1%THD- 1700 W
 8 Ω Bridge Mono- 4200 W
 4 Ω Bridge Mono- 5200 W
 Distortion (SMPTE-1M) <0.01%
 S/N Ratio 103 D
 BDamping Factor >1000
 Frequency Response 20 Hz – 20 KHz
 Class HEIA Rack Space 3
 Dim.(WXHxD) Mm 482 X 132 X 483
 Weight (In Kgs) 47



collaboration with





ATZA-5000BTE

2 ZONE AMPLIFIER

ATZA-5000BTE

Power Output	300W+300W Max, 250W+250W RMS at 10% THD, 180W+180W RMS at 5% THD, 165W + 165W RMS at 2% THD
Output Regulation	2 dB, no load to full load at 1kHz
Input Channels	Mono 6x Mic 0.6mV/4.7k Ω , 2 x Aux 100mV/470k, Stereo L/R 200mV/100K Ω , Line L/R 1V/50K Ω
Frequency Response	50-15,000Hz \pm 3dB
Signal to Noise Ratio	600B
Tone Controls Bass:	\pm 10dB at 100Hz, Treble: \pm 10dB at 10kHz
Outputs Preamp	200mV/6000, Line 1V/1K Ω
Speaker Outputs	40. 80. 70V & 100V for each zone
Power Supply AC:	220-240V 50/60Hz DC: 24V (2x12V Car Battery)
Power Consumption AC:	700VA DC: 9A
Dimensions	W510xH172xD385 mm
Weight	24.2kg



EQUALIZER 231

- ▶ Dual 31-band, 1/3-octave Constant Q frequency bands
- ▶ Switchable boost/cut ranges of ± 6 or ± 12 dB
- ▶ Front panel bypass switch
- ▶ ± 12 dB input gain range
- ▶ 4-segment LED ladders for monitoring output levels
- ▶ XLR and TRS Inpts and Outputs
- ▶ Frequency Response of $< 10\text{Hz}$ to $> 50\text{kHz}$
- ▶ Dynamic range of greater than 108dB



SC203 **NEW MODEL 2024** (3 Way Crossover) BASS CROSSOVER



234XL (2/3/4 Way Crossover) BASS CROSSOVER



3.1F BASS CROSSOVER



ATi Rev100 **NEW MODEL 2023** EQUALISER



3.2F BASS CROSSOVER



260 DIGITAL CROSSOVER

SOUND PROCESSOR



NEW LAUNCH MIDIVERB 4



DSP4X8SM

WIRED MICS

All ATIpro mics comes with high quality materials for durability & carry pouch.



BETA 58C

BETA 58

ATI 77

ATI 78

D5

ATI 600

ATI M8

IMPORTED MIC STANDS



ATI DGN
BMS2



ATI DGN
BIG



ATI DGN
SMALL

WIRELESS MICS



ATI-408A



ATI-408B



ATI-408C



ATI-2K



ALL MICS COMES WITH INBOX FLIGHT CASES

PINS & CONNECTORS



A302

Speaker 4 Pin Connector
Zinc Pin, Blue Color

A302W

Speaker 4 Pin Connector
Copper Pin, Blue Color

A312G

Speaker 4 Pin Connector
Golden Pin, Blue Color

A311

Speaker 4 Pin Socket
Copper Contact, Black Color



A311G

Speaker 4 Pin Socket
Golden Pin, Black Color

A304

Speaker 4 Pin Connector
Copper Pin

A601

Speaker 4 Pin Connector
Copper Pin, Retardant Material
Waterproof

A801



A802

A803G

A810

A810BG



A823BG

A829

A907

A908

PINS & CONNECTORS



A905BG-2

XLR Male 3 Pin Connector
Golden Pin, Black House

A906BG-2

XLR Female 3 Pin Connector
Golden Pin, Black House

A905

XLR Male 3 Pin Connector

A906

XLR Female 3 Pin Connector



World's Best AUX Cable



ARC013

Dual RCA to 3.5mm

A002

A301

A501



A605

A823LBG

A903

A904



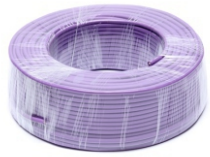
A907BG

A908BG

ARC014

A016

PINS & CONNECTORS



AM006



ARC025



ATCA12



MA301



CABLE DRUM



T701



T702

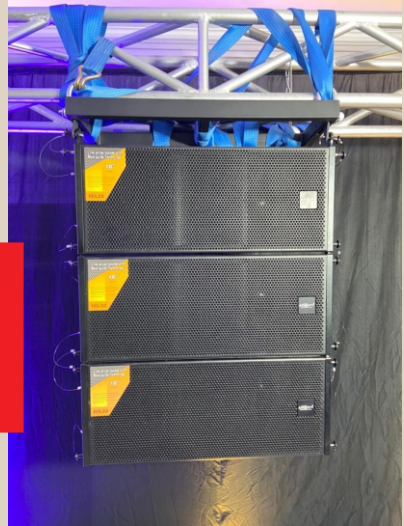


T306



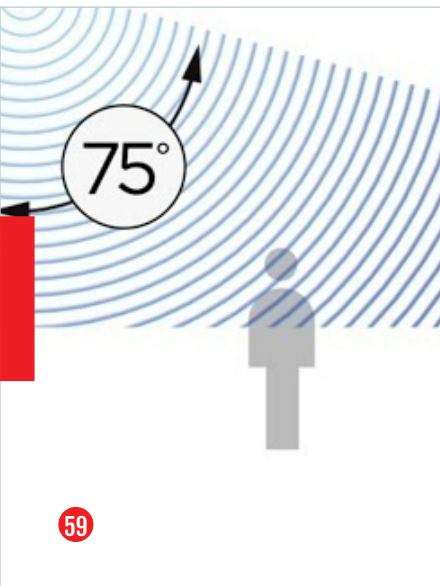
HDL2010 2 WAY

- ▶ 2x80 Watts Polymer Diaphragm Neodymium Compressor Driver.
- ▶ 2x10" High Efficiency 500 Watts Neodymium Speaker.
- ▶ Enclosure constructed of high quality plywood with rugged durable finish
- ▶ Precision crossover for optimal driver integration
- ▶ Italian technology



HDL212 2 WAY

- ▶ 2x12 High Efficiency 600 watts Neodymium speaker.
- ▶ 2x110 watts polymer diaphragm Neodymium compression driver
- ▶ Enclosure constructed of high quality plywood with rugged durable finish
- ▶ Precision crossover for optimal driver integration



▶ Controls the direction of sound and projects sound out with 75 degrees of asymmetrical vertical coverage and wide horizontal coverage. ▶

**World's First
Line Array
Systems
with
PhaseGuide
Technology**

VoiceEngine® voice Sugar™



HDL312 3 WAY

- ▶ 1*12" *(300mm) / 3" voice coil NEO LF Driver.
- ▶ 3*3" *(83mm) / 0.6" voice coil NEO MF Driver.
- ▶ 3*1" *(25mm) / 1.7" voice coil NEO HF Driver.
- ▶ Enclosure constructed of high quality plywood with rugged durable finish
- ▶ Precision crossover for optimal driver integration
- ▶ Italian Technology



India's **Most Powerful** 3 Way Line Array System

ATIPRO LOADED CABINETS

SRX 120

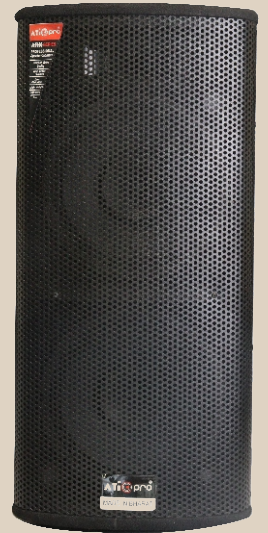
Input Power: 100W RMS
Freq.-Response: 55Hz-22 KHz
Nominal Impedance: 8 Ohms
Input Connectors: 6.35mm
Phone Jack + Terminal Strip
Max. Rated Spl.: 117dB



INDIAN

SRX 250

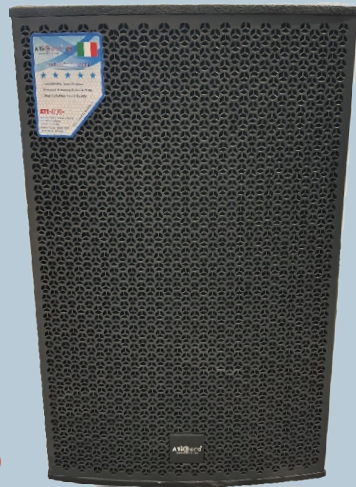
Input Power: 200W RMS
Freq.-Response: 55Hz-20 KHz
Nominal Impedance: 8 Ohms
Input Connectors: 6.35mm
Phone Jack + Terminal Strip
Max. Rated Spl.: 123dB



INDIAN

ATI 915

Speaker Type: 2 Way Passive
LF: 15"x1 -(650W)
HF: 3"x1 - (120W)
Rated Power: 800W RMS
Impedance: 8Ohms



IMPORTED

ATI 725

Speaker Type: 3 Way Passive
LF: 15"x2 -(650W)
HF: 3"x1 - (120W)
Rated Power: 1300W RMS
Impedance: 4Ohms



IMPORTED

ATI 218

Speaker Type: SUB
LF: 18"x2
Rated Power: 4000W RMS
Impedance: 4Ohms



IMPORTED

**INDIA'S MOST
PREMIUM
QUALITY
LOADED
CABINETS**

LINE ARRAY & SPECIAL BASE CABINETS



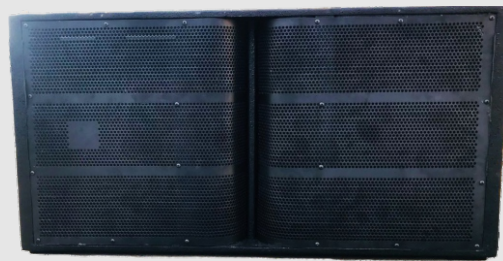
INDOOR LINE RAY



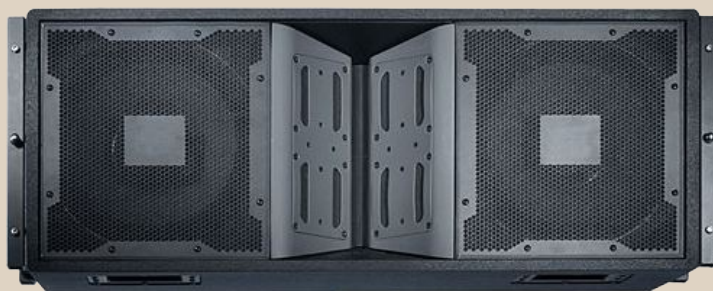
VRX 932



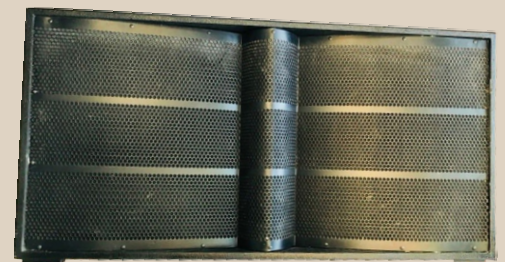
LF-7



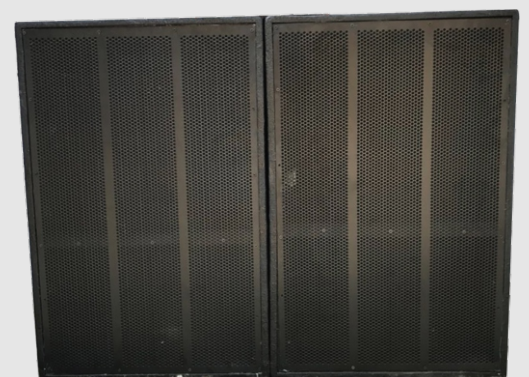
LF-8



ATI 4888



LF-9



HOG SCOOP

“All Both empty & complete cabinets available”

All our cabinets are made from birch wood, it offers quality & reliability.

CABINETS



V35



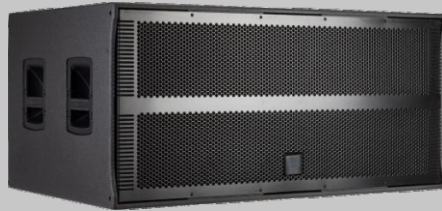
M22



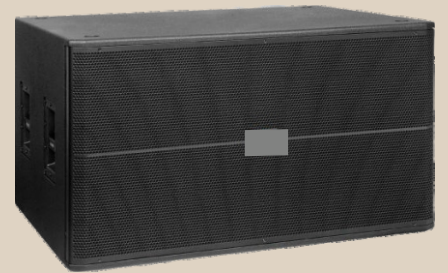
915



828



V218



728



725



825



V45



718



DJ MIXER

DJM-363M Pro 3-Channel



DJ MIXER

DDJ-3



DJ MIXER

M-4 4 CHANNEL



DJ MIXER/ LIVE MIXER

M-6 6 CHANNEL

DJ MIXER/ LIVE MIXER



MX300

DJ MIXER/ LIVE MIXER



ATI4 4 Channel

1. 4 MIC input
2. There has mute function in each channel.
3. Equiped with PFL in each channel
4. Left, Right main output, effect output
5. 16 kinds of DSP effect
6. Spreatly faders control MP3 volume
7. 48V phantom power supply
8. 7 bands EQ in main output
9. MP3 player with recording function
10. Bluetooth with monitor controller

DJ MIXER/ LIVE MIXER



ATI8 8 Channel

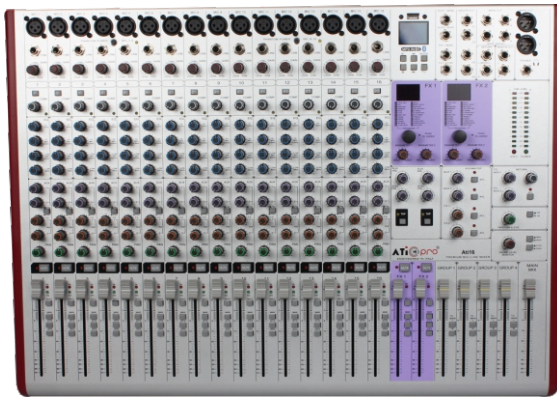
1. 8 MIC input,
2. Color display screen.
3. Each channel is equipped with PFL
4. Left, right main output, 1 group of AUX output
5. 99 kinds of DSP reverberation effects
6. Extensive pushers to control MP3 volume
7. 48V Phantom power supply
8. 7 Main output band equalizer
9. An MP3 player with recording function and Bluetooth. Monitoring controller"

ATI@pro

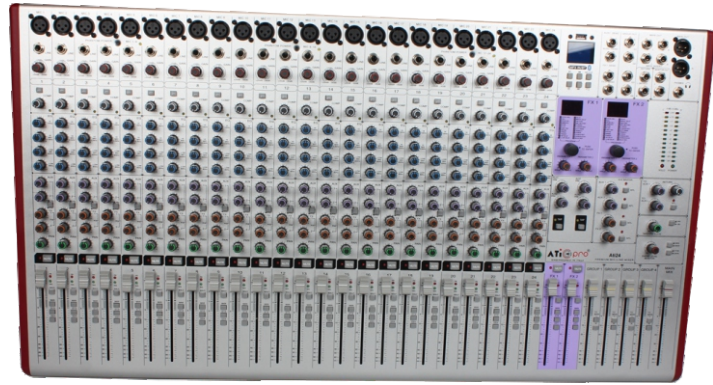


ATI12 12 Channel

1. 12 MIC input,
2. Color display screen.
3. Each channel is equipped with PFL
4. Left, right main output, 1 group of AUX output
5. 99 kinds of DSP reverberation effects
6. Extensive pushers to control MP3 volume
7. 48V Phantom power supply
8. 7 Main output band equalizer
9. An MP3 player with recording function and Bluetooth. Monitoring controller"



ATI16 16 Channel



ATI24 24 Channel

Specification

- ▶ 24/32 mono
- ▶ 4 group out +1 stereo output
- ▶ 4 AUX sends +1 stereo return
- ▶ 4 band EQ very channel
- ▶ 9 band EQ on main output
- ▶ +48V phantom power
- ▶ XLR balance output
- ▶ DJ light
- ▶ Independent monitor function
- ▶ 100MM faders



**ATIPRO EXCLUSIVE DESIGN
BETTER SOUND QUALITY THEN TRADITIONAL COPY CHINESE LIVE MIXERS
EASY AVAILABILITY OF SPARES.**

KLA-24



KLA-16



KLA-12



KLA
SERIES



UT
SERIES

UT-12M



UT-8M



**NEWLY
LAUNCHED
MIXERS**

DG-4M



DG-6M



DG
SERIES



ATI-626U 3 CHANNEL

- Full multimedia controls with remote
- Separate and Master Control Knobs with Headphone Jack
- Digital Display, Mp3 and USB
- Feather Like FADERS with Level Markings
- Individual Ch. Low-Mid-High & Gain Controls
- Heavy Metal Casing
- Separate Echo Section & Comes With Remote Control
- LED Indicators & Feather Like Gliders
- Multi Output Options
- Smooth Hassle Free Operation

**Most Powerful
&
Economical
Made in India
DJ Mixers**

SPEAKER PARTS & MATERIALS



DJ Speaker Cone
all imported quality



Damper/ Spider
all imported quality



Lead Wire
all imported quality



Ring Ferrite Magnet
various sizes & grades available



T Yoke & Washer
carbon free for high quality sound



Frames
all imported quality



Voice Coils
imported coils
of different materials



Terminals
copper terminals for high
quality sound & durability



Speaker Ring Gasket



Dust Cap

ATI  **pro**®

ENGINEERED IN ITALY

INDIA'S LEADING PRO LIGHTING BRAND

We are working on various Technologies
to give our customer enhanced experience
on all our products.

“ TECHNOLOGY SUN “





SP001

Voltage AC90-240V 50/60HZ
Power 200W
Light source 4PCS x 50w
Color Warm White
Channels 8/4CH
Operation DMX512, Auto, Sound, Master-slave
Packing Container 4PCS/Carton

LED PAR LIGHTS



ATI-SP007

Voltage AC90-240V 50/60HZ
Power 150W
Light source 60PCS RGB 3IN1 COLOR
Material Cast-Aluminum body
DMX Channels 6 channel combination optional
Packing Container 4PCS/Carton
Type Single Wire

LED PAR LIGHTS



ATI-SP007H

Voltage AC90-240V 50/60HZ
Power 150W
Light source 60PCS RGB 3IN1 COLOR
Material Cast-Aluminum body
DMX Channels 6 channel combination optional
Packing Container 4PCS/Carton
Type 4 Wires

NEW LAUNCH



SP-L16A

Waterproof

Light source 54*3W RGBW LED, Outdoor slim PAR
Life Span 60,000 Hours
Color RGBW Mixing
Rated Power 180W
Mode Auto/Sound/DMX/Master-Slave
Channel 4/8

NEW LAUNCH



ATI-SP014RGBW

Voltage: AC110-220V50-60HZ
Power: 120W or 200W
Light source: 36PCS or 54 PCS RGBW 4IN1
Color Material: Cast-Aluminum body
DMX Channels: 6 channel combination optional
Packing Container: 6 PCS/Carton

LED PAR LIGHTS



ATI-SP035

Voltage AC110-220V 50/60HZ
Power 120W or 200W
Light source 54PCS RGB 3IN1 COLOR
Material Cast-Aluminum body
DMX Channels 6 channel combination optional
Packing Container 6PCS/Carton

NEW LAUNCH



SLIM60-RGB

Voltage AC90-240V 50/60HZ
Power 100W
Light source 60PCS RGB 3IN1 COLOR
Material Cast-Aluminum body
DMX Channels 6 channel combination optional
Packing Container 20PCS/Carton

L ED PAR LIGHTS



SP511 RETRO

Working voltage: AC220V/50Hz
Product power: 260w
Lamp beads: 3 60w gold COB (main light), 36 3w3535 three-in-one lamp beads (auxiliary light RGB), 1 40w four-in-one lamp bead (dyeing beam RGBW)
Control mode: International general DMX512, master/slave, self-propelled, voice control.
Dimming mode: 0-100% ultra-smooth dimming
Channel mode: 15/20/26CH
Strobe: 25 times/second
Product size: 490*450*230mm
Packaging size: 560*500*270mm
Lamp net weight: 8.2kg
Gross Weight: 9kg

SHARPEE LIGHTS



SP10W

Light source 10W Cree LED
Rated Power 35W
Source lifetime 5000-10,000 hours
Scanning angle X axis 540°, Y axis 200°
Working environment Indoor 10-40 Deg Celsius
LED angle 25°
DMX channel 9/11
N.W./ G.W. 3.11/ 3.5 KGS
Packing 4 pcs/carton
Product size 175*146*286mm
Features 7-color disk + 8-pattern disk
Application Disco, theaters, auditorium, etc.

Mini Moving Head

SHARPEE LIGHTS



SP90W

Light Source 90W LED
Rated Power 150W
Control mode Auto/Sound/DMX512/Master-slave
DMX channel 9/16
Lifetime 5000-10000 hours
Scanning angle X axis 540°, Y axis 270°
N.W./G.W.(kg) 8.5/9.04KG
Features 7-color disk + 9-pattern disk + 7-pattern disk
Application Disco, bars, theatres, auditorium, activities like wedding, live gig/performance, etc.

7 Color Disk
9 Pattern Disk

SHARPEE LIGHTS



SP8R

Light Source 8R 230W japan Lamp with Button Press Control
Source lifetime 2000 hours
Power supply AC 100-240V, 50-60HZ
Rated Power 400W
Color temperature 8000K
Color 14 colors + blank color
Gobo 17 fixed gobos + blank gobo
Prism rotation 8 prism, bilateral rotation
Lens high precision optical lens with zoom
Dimmer 0-100% linear dimmer
Strobe 1-12 times/s double strobe
Control Mode Auto/Sound/DMX512/Master-slave
DMX 16/20CH **Class of protection** IP20

Robotic version 3.0!
Slim Design

SHARPEE LIGHTS



ATIPRO-291 (9R)

Light Source Power: 300W
Voltage: AC 200V~240V/50~60Hz
Color wheel: Each color wheel consists of 10 color chips + 1 white light
Pattern Wheel: 14 pattern effects 540° pan, 270° tilt.
Overheating protection
Control Mode: DMX512/master-slave/automatic;
Double Prism: 1 8 prism, 1 8+16+24 honeycomb prism

NEW LAUNCH YODN 260 Lamp



SP10R Fighter

High Speed Technology

Lamp: MSD Platinum 10R 280
(life:2200 hours Color temperature: 8000K)
Channel mode: 16 DMX512 Channel
Pan Scan: 540°(16bit) Electric correction
Tilt Scan: 270° (16bit) Electric correction
Color wheel: One color wheel, 13 kinds of color chips in one color wheel
Gobo: 14 gobos
Effect Wheel: Rotation eight prism, effect move, frost 0-100% mechanical dimming, mechanical dimming and free dimming available. strobe macro control available.
Beam Angle 0~4°

SHARPEE LIGHTS



12R Qayamat

Lamp: Philips MSD Platinum 12R
Channel mode: 18 DMX512 Channel
Pan scan : 540°(16bit) Electric correction
Tilt scan : 270° (16bit) Electric correction
Color wheel: One color wheel, 12 kinds of color chips in one color wheel
Gobo: 14 gobos
Effect Wheel: Rotation eight prism, effect move , frost 0-100% mechanical dimming, mechanical dimming and free dimming available.
Beam angle 0~4°

SHARPEE LIGHTS



SP12R Fighter

Lamp: MSD Platinum 295 12R
Mode: DMX512, 16ch Program
PRISM: 8-16-24 Spot Normal Laser Prism, +8 With Auto focus
GOBO: 5 3D Glass gobo

High Definition

Hybrid+Technology

Super Slim Design

260 Yodn Lamp

NEW LAUNCH



SP14R Qayamat

Lamp: 315w Japan platinum,
Mode: DMX512, 18ch
Display: Big Touch Display
PRISM: 8-16-24 Spot Clear Laser Prism
16-8-6 Linear Prism, Auto focus
GOBO: 5 diamond 3D Glass gobo

SHARPEE LIGHTS

NEW LAUNCH



SP17R

Light Source Yodn 350 Watts
Power Supply AC 100-240V, 50-60HZR
Rated Power 500W
Source Lifetime 2000 Hours
Control Mode Auto/Sound/DMX512/Master-Slave
DMX Channel 16/20C

SHARPEE LIGHTS

NEW LAUNCH



SP20R

Highest Brightness Ultrasonic Speed

Light source Yodn 350 watts with 2.4 inch color touchscreen
Rated Power 505W
Source lifetime 2000 hours
Power Supply AC 100-240V, 50-60HZ
Color Temperature 8000K
Colors 13 colors + blank color
DMX channel 16 CH
Control Mode Auto/Sound/DMX512/Master-slave
N.W./ G.W. 15.72/19 KGs

SHARPEE LIGHTS

NEW LAUNCH



S-300

SHARPEE LIGHTS

Voltage: AC100-240V, 50-60HZ
Power: 60W
Light source: 1p cstwrgb w4inlled26cm
Pattern: Voice activation, master-slave mode automatic operation
DMX Passageway: 12/14ch8888 PA
Size: 15.8x14.5x26cm8888H positive
Net weight: 2.40kg 15.8cm

NEW LAUNCH



SP128 BEAM

SHARPEE LIGHTS

Voltage: AC110-220V, 50-60HZ
Power: 120W
Light source: 1 100W white light bulb
Pattern: 8 patterns
Color: 8 colors
Channel: 11/13CH
Control mode: Voice control, master-slave, self-propelled, DMX
X axis: 540°
Y axis: 180°
Manual focussing

NEW LAUNCH



ATI-SP2X2 EYES

BLINDER

Voltage: AC90-240V 50HZ/60HZ
Power: 200W
Light Source: 2pcs 100w Jingxin lamp beads
Luminescent Color: White light, warm white highlight, 90%
Luminescent Angle: 60 Degrees
Control mode: DMX/master-slave/self-propelled
Channel: 4/8CH Channel
Color temperature: 3200-5600K

NEW LAUNCH



ATI-SP4X2 EYES

BLINDER

Voltage: AC90-240V 50HZ/60HZ
Power: 400W
Light Source: 4pcs 100w Jingxin lamp beads
Luminescent Color: White light, warm white highlight, 90%
Luminescent Angle: 60 Degrees
Control mode: DMX/master-slave/self-propelled
Channel: 2/6/12CH Channel
Color temperature: 3200-5600K

NEW LAUNCH

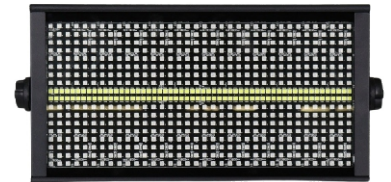


ATI XX1-COB

BLINDER

Voltage: AC110-220V 50/60HZ
Power supply: 200W
Light source: 4PCS*50w
Color: Warm White
Channel: 8/4CH
Operation: DMX512, Auto, Sound, Master-slave
Packing Container: 4PCS/Carton

NEW LAUNCH



ST-960

AUTOMATIC STROBE LIGHT

Colors: RGBW Colors
Blinkers: White LED Strip
Controllers: DMX
Sound Mode: Auto

NEW LAUNCH



ATI SP007

- Color-** RGBW
19 LED Light Bulb
Zoom In Zoom Out
BRIGHTO Technology
High Quality
Premium Components

MOVING WASH LIGHT



SP06R

6 head red laser bar, each head power is 500mW, total is 3W
Beam Diameter is 15mm
Effect: Laser ON/OFF effects, tracing effects, etc.
Play mode: Auto, Sound active, DMX512, Master/Slave
Pan angle: 240 degree
Title: 140 degree
Voltage: 110 ~240V; 50/60Hz
Power consumption: 150W
Application: Night club, Laser show, stage, etc.

8 head red laser bar, each head power is 500mW, total is 4W.
Beam Diameter: 15mm
Effect: Laser ON/OFF effects, tracing effects, etc.
Play mode: Auto, Sound active, DMX512, Master/Slave
Pan angle: 240 degree
Voltage: 110 ~240V;50/60Hz
Power consumption: 150W
Application: Night club, laser show, stage, etc.



SP08R

Laser Power: 1W RGB. **Red:** 100mW @638nm, **Green:** 100mW @532nm, **Blue:** 800mW @450nm
Scanner: 20KPPS, max scanning angle is 40 degree
Laser Effect: More than 128 graphics and beam effects built inside. Also the users can use laser control software to edit their own programs and show them by the laser through ILDA PC mode.
Play mode: Auto, Sound active, DMX512,Master/Slave, ILDA PC control.
Voltage: 110~240V,50/60Hz
Power consumption: 150W
Application: Night club, party, laser show, etc.



SP01RGB

Laser Power: 3W RGB. **Red:** 600mW @638nm, **Green:** 700mW @525nm, **Blue:** 1800mW @450nm
Scanner: 25KPPS, max scanning angle is 50 degree
Laser Effect: More than 128 graphics and beam effects built inside, And there is a free SD card software inside the laser. Users can edit some simple programs and store into the laser, then can display the out. Also they can buy professional laser software to edit their own programs, then display them out through the ILDA PC mode.
Play mode: Auto, Sound active, DMX512,Master/Slave, ILDA PC control, SD card.
Voltage: 110~240V, 50/60Hz
Power consumption: 180W
Application: Night club, Party, Laser show, etc



SP03RGB



NEW LAUNCH SP05RGB

Laser Power: 5W RGB. **Red:** 1W @638nm, **Green:** 1W @525nm, **Blue:** 3W @450nm

Scanner: 25KPPS,max scanning angle is 50 degree (40KPPS for options)

Laser Effect: More than 128 graphics and beam effects built inside. And there is a free SD card software inside the laser. Users can edit some simple programs and store into the laser, then can display them out. Also they can buy professional laser software to edit their own programs, then display them out through the ILDA PC mode.

Play mode: Auto, Sound active, DMX512,Master/Slave, ILDA PC control, SD card.

Voltage: 110~240V,50/60Hz

Power consumption: 180W

Application: Night club, party, laser show,etc.

Laser Power: 20W RGB laser. **Red:** 5W @638n, **Green:**5W @525nm, **Blue:**10W @450nm.

Scanner: 35KPPS,max scanning angle is 60 degree

Laser Effect: More than 128 graphics and beam effects built inside. And there is a free SD card software inside the laser. Users can edit some simple programs and store into the laser, then can display them out. Also they can buy professional laser software to edit their own programs, then display them out through the ILDA PC mode.

Play mode: Auto,Sound active, DMX512,Master/Slave, ILDA PC control,SD card.

Voltage: 110~240V,50/60Hz

Power consumption: 200W

Application: Night club,party,laser show,etc.



NEW LAUNCH SP20RGB

Laser Power: 1watt green laser, wavelength is 525nm.

Scanner: 20KPPS,max scanning angle is 40 degree

Laser Effect: More than 128 graphics and beam effects built inside. Also the users can use laser control software to edit their own programs and show them by the laser through ILDA PC mode.

Play mode: Auto, Sound active, DMX512,Master/Slave, ILDA PC control.

Voltage: 110~240V,50/60Hz

Power consumption: 150W

Application: Night club, party, laser show, etc.



SP01GREEN

Laser Power: 15W green laser @525nm

Scanner: 35KPPS,max scanning angle is 60 degree

Laser Effect: More than 128 graphics and beam effects built inside. And there is a free SD card software inside the laser. Users can edit some simple programs and store into the laser, then can display them out. Also they can buy professional laser software to edit their own programs, then display them out through the ILDA PC mode.

Play mode: Auto, Sound active, DMX512,Master/Slave, ILDA PC control, SD card.

Voltage: 110~240V,50/60Hz

Power consumption: 200W

Application: Night club, party, laser show, etc.



SP05GREEN



NEW LAUNCH SP06GREEN

Laser Power: 5W green laser @525nm
Scanner: 40KPPS,max scanning angle is 30 degree
Laser Effect: Pure diode green laser with more stable performance and longer working life. The machine can work in -20°C- 50°C. Use LCD display technology, SD card functions. All the pattern sizes, sensitivity, color setting, scanner speed and mirror image, etc are set by button. Easy to operate and understand. Lower the hardware failure rates.
Play mode: ILDA PC Control, DMX512, Sound Active, AUTO, Master/Slave
Voltage: 110~250V,50/60Hz
Power consumption: 100W
Application: Night club, party, laser show, etc.

LASERS

Laser Power: 10W green laser @525nm
Scanner: 35KPPS,max scanning angle is 60 degree
Laser Effect: More than 128 graphics and beam effects built inside. And there is a free SD card software inside the laser. Users can edit some simple programs and store into the laser, then can display them out. Also they can buy professional laser software to edit their own programs, then display them out through the ILDA PC mode.
Play mode: Auto, Sound active, DMX512,Master/Slave, ILDA PC control, SD card.
Voltage: 110~240V,50/60Hz
Power consumption: 180W



SP10GREEN

LASERS



NEW LAUNCH SP15GREEN

Laser Power: 5W green laser @525nm
Scanner: 40KPPS,max scanning angle is 60 degree
Laser Effect: More than 128 graphics and beam effects built inside. And there is a free SD card software inside the laser. Users can edit some simple programs and store into the laser, then can display them out. Also they can buy professional laser software to edit their own programs, then display them out through the ILDA PC mode.
Play mode: Auto, Sound active, DMX512,Master/Slave, ILDA PC control, SD card.
Voltage: 110~240V,50/60Hz
Power consumption: 180W
Application: Night club, party, laser show, etc.

LASERS

Laser Power: 40W RGB Laser, R: 8W @638nm, G: 10W @520nm, B: 12W @450nm
Scanner: 35KPPS,max scanning angle is 60 degree
Laser Effect: The SP040RGB-FB4 is next generation laser show projector system with integrated Pangolin FB4 DMX network interface. It is made of full diode solution and full analog laser modulation. This laser also can be controlled directly by the lighting desk over the Artnet.
Play mode: Auto,Quickshow/Beyond,DMX,Artnet
Voltage: 110~240V,50/60Hz
Power consumption: 180W - 250W
Application: Night club, party, laser show, etc.



NEW LAUNCH SP040RGB-FB4

LASERS

NEW LAUNCH

SMOKE MACHINES



SP900W

Power: 900W
Voltage: AC 220V 50Hz
Warm-up time: 3.5minutes
Capacity of tank : 1liters
Fluid consumption(100% output): 5000Cuft/min
Control mode: Wired and wireless remote control
Smoke distance: 2-3meters
Weight: 4.1kgs

SMOKE MACHINES



SP1200W

Voltage AC220V 50Hz/ 110V 60Hz
Power 1200W
Tank capacity 2L
Control mode Remote control+Wire Control
Warm up 5min
N.W 5.5KG
G.W 6KG
Packing size 53x33x23CM

SMOKE MACHINES



SP1200W DMX

Voltage AC220V 50Hz/ 110V 60Hz
Power 1200W
Tank capacity 2L
Control mode Remote Control
Warm up 5min
N.W 5.5KG
G.W 6KG
Packing size 53x33x23CM

SMOKE MACHINES



1200W LED

Voltage AC220V 50Hz/ 110V 60Hz
Power 1200W
Tank capacity 2L
Control mode Remote control
Warm up 5min
N.W 5.5KG
G.W 6KG
Packing size 53x33x23CM

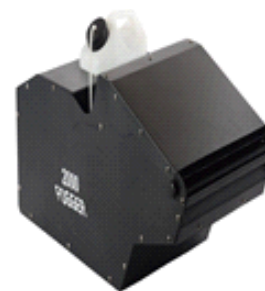
SMOKE MACHINES



SP1500 HAZE

Voltage AC220V 50Hz/ 110V 60Hz
Power 1500W
Tank capacity 2L
Smoke output 8000cu ft/min
Control mode DMX512+remote control
Warm up 2min
DMX channel 2
N.W 12KG
G.W 13KG
Packing size 63x34x36CM

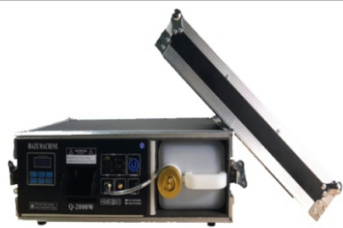
SMOKE MACHINES



SP2000 HAZE

Voltage AC220V 50Hz/ 110V 60Hz
Power 3000W
Tank capacity 3.5L
Control mode Remote control+DMX512+LCD control
Warm up 5min
N.W./ G.W. 14/ 14.5 KG
Packing size 75x41x37CM

SMOKE MACHINES



SP2000W MORNING HAZE
DMX512+Flight Case

Voltage AC220V 50Hz/ 110V 60Hz
Power 2000W
Tank capacity 3.5L
Control mode DMX512+Remote Control
Warm up 2min
DMX Channel 2
G.W 16.5KG
Packing size 65x28x43CM

SMOKE MACHINES



SP1200W HAZE
DMX512+Flight Case

Voltage AC220V 50Hz/ 110V 60Hz
Power 3000W
Tank capacity 3.5L
Smoke output 3500cu ft/min
Control mode DMX512+Remote Control
Warm up 2min
DMX Channel 2
G.W 16.5KG
Packing size 54x28x41CM

SMOKE MACHINES



SP1500 W

Power: 1200W
Voltage: AC 220V 50Hz
Warm-up time: 3.5minutes
Capacity of tank : 1liters
Fluid consumption(100% output): 5000Cuft/min
Control mode: Wired and wireless remote control
Smoke distance: 2-3meters
Weight: 5.8kgs

SMOKE MACHINES



SP1500W DMX

Voltage AC220V 50Hz/ 110V 60Hz
Power 1500W
Tank capacity 2L
Control mode Remote control+Wire Control
Warm up 5min
N.W 5.5KG
G.W 6KG
Packing size 53x33x23CM

SMOKE MACHINES



SP1500W LED

Voltage AC220V 50Hz/ 110V 60Hz
Power 1500W
Tank capacity 2L
Control mode Remote control
Warm up 5min
N.W 5.5KG
G.W 6KG
Packing size 53x33x23CM

SMOKE MACHINES



SP2000W

Power: 2000W
Voltage: AC 220V 50Hz
Warm-up time: 3.5minutes
Capacity of tank: 1liters
Fluid consumption(100% output): 5000Cuft/min
Control mode: Wired and wireless remote control
Smoke distance: 2-3meters
Weight: 5.8kgs

SMOKE MACHINES



2000W 24 PCS

Voltage	AC220V 50Hz/ 110V 60Hz
Power	1500W
RGB	3 in 1
Tank capacity	2.5L
Spray height	10M
Smoke output	5000cu ft/min
Control mode	DMX512+remote control
Warm up	5min
DMX Channel	7
G.W	8KG
Packing Size	46x36x25CM

SMOKE MACHINES



BIG BUBBLE WITH 2 RING

Voltage	AC220V 50Hz/ 110V 60Hz
Power	300W
Tank capacity	2.5L
Control mode	Remote control+Manual
Warm up	5min
N.W	5KG
G.W	9KG
Packing Size	52x48x48CM

SMOKE MACHINES



FOG LIQUID

1bot / 5L	4bots / 1ctn
G.W	20.5KG
Packing Size	31x28x38CM

JET GUN



HANDHOLD CO2

Control mode	Manual
N.W	1.5KG
G.W	2KG
Packing size	71x24x16CM



230W

Voltage AC90V~240V 50Hz/60Hz
Power Consumption 230W
Light Source LED150w
Color A color wheel 5 colors + white
Control System self tuning knob control
Control Mode Single machine manual mode
Heat Dissipation System High strength air cooling + pure copper heat dissipation + nano heat conduction + aluminum profile heat radiation
Aperture Effect aperture size adjustable
Safety Measures in line with all kinds of s
Shell Aluminum alloy edge
Naked light size 71x38x60cm
Lamp weight (including bracket) 21kg
Including air box weight 25kg

LED FOLLOW

LED FOLLOW



280W

Voltage AC90V~240V 50Hz/60Hz
Power Consumption 280W
Light Source LED150w
Color A color wheel 5 colors + white
Control System self tuning knob control
Control Mode Single machine manual mode
Heat Dissipation System High strength air cooling + pure copper heat dissipation + nano heat conduction + aluminum profile heat radiation
Aperture Effect aperture size adjustable
Safety Measures in line with all kinds of s
Shell Aluminum alloy edge
Naked light size 71x38x60cm
Lamp weight (including bracket) 21kg
Including air box weight 25kg

LED FOLLOW



330W

Voltage AC220V~240V 50Hz/60Hz
Power Consumption 330W
Light Source OSRAM 230W gas discharge lamp
Color A color wheel 4 colors + white, pattern can be customized
Control Signal Homemade Signal
Strobe 1-7 times / second strobe
Color Correction normal 5600k, increase 6000K, drop 3200K, Light distance: 10-25m
 Light angle: 23°
Weight Including bellows 15Kg



380W

Voltage AC90V~240V 50Hz/60Hz
Power Consumption 320W
Light Source LED300w
Color A color wheel 5 colors + white
Control System self tuning knob control
Control Mode Single machine manual mode
Heat Dissipation System High strength air cooling + pure copper heat dissipation + nano heat conduction + aluminum profile heat radiation
Aperture Effect aperture size adjustable
Safety Measures in line with all kinds of s
Shell Aluminum alloy edge
Naked light size 108x60x55CM
Lamp weight (including bracket) 21kg
Including air box weight 45kg

LED FOLLOW

CONTROLLERS



INDIA'S ONLY DMX WITH DUAL POWER SUPPLY

192 DMX

Voltage AC90-240V 50HZ/60HZ
Channel 192DMX CHANNEL
 Scenes 8 programmable SCENES.
 Features 8 adjustable potentiometer to adjust the output size.
 Built-in MIC head, and voice features.
 Automatically trigger state, tap sync button or the speed potentiometer to determine automatically trigger time.
 4 LED digital display.
 Show the first show changes second place display scenes
 Third, four display banks, Black out function can be used manually.
 Chases programming and chases run function can be used manually output delay function, the fade time potentiometer to adjust the delay time.
Packing size 54x16x10cm
Packing weight 1.55kg

CONTROLLERS



DMX 200

Channel 192, controlled amount of 16 channel 12
 - Six Lights Program
 - New Programming idea, step can edit and store 184 scenarios
 - Edit and run walk each lamb program100
 - Can be combined by the memory of any\ built-in voice control lamb Function, black field o/p function
 - Light speed and gradient adjustment function



DMX-SPLITTER

- Power** AC 110v-240V
Frequency 50Hz - 60 Hz
Signal Input Interface Standard DMX512 signal, 3pin/ 5 pin
- Gold plated XLR male and female socket in parallel
 - Output signal interface use three-pin gold-plated XLR female socket
 - Transformer based isolation per channel



MADE WITH HIGH QUALITY JAPANESE BUTTONS

STABLE RAM

STABLE PROCESSOR

MINI PEARL 1024A

DMX512 channels	1024
Mating number of fixtures	96
Each scanner maximum available control channels	40 main channel +40 trim
Fixture library	R20 pearl light library
Scenes that can be saved	60
Scenes that can run simultaneously	10
Steps in a multi-step scenario	600
Scene time control	fade in, fade out, LTP sliding
Graphics can be stored for each scene	5
Graphics generator	can generate dimmer, P/T, RGB, CMYK, Color, Gobo, Iris, Focus Graphics
Graphics can be run at the same time	10
Master fader	Global, Repeat,
Lighting	
U disk read	Support FAT32format

DMX512 channels	1024
Mating number of fixtures	96
Each scanner maximum available control channels	40 main channel +40 trim
Fixture library	R20 pearl light library
Scenes that can be saved	60
Scenes that can run simultaneously	10
Steps in a multi-step scenario	600
Scene time control	fade in, fade out, LTP sliding
Graphics can be stored for each scene	5
Graphics generator	can generate dimmer, P/T, RGB, CMYK, Color, Gobo, Iris, Focus Graphics
Graphics can be run at the same time	10
Master fader	Global, Repeat,
Lighting	
U disk read	Support FAT32format



MADE WITH HIGH QUALITY JAPANESE BUTTONS

STABLE PROCESSOR

STABLE RAM

MINI PEARL 1024B



MADE WITH HIGH QUALITY JAPANESE BUTTONS

PILOT 2000

- Universal DMX-512 controller able to control upto 40 units.
- Each unit with maximum 36 channels. Total of 512 DMX Channels.
- Able to control dimmer pack with maximum of 192 channels
- 40 programs or chases, m chases, presets each program chase.
- Able to use 4 programs, 4 chases, 4m chases, 4 presets at the same time.



TIGER TOUCH 2

- Titan 11.1, 8 DMX Ports
- 10 pageable playbacks, 10 static playbacks
- Built in UPS
- 4 physical DMX outputs, so upto 16 over Artnet or sACN-8192 channels
- Expansion upto 64 universes
- Dual ethernet port
- External touch screen support
- 10 programmable executor buttons
- Conveniently accessible front loading USB

- Powerful expert titan 10.1/11.1 systems
- Core i5 Dual core processor, Intel 120G SSD, 4G (DDR3) notebook memory.
- 12 DMX output, 6144 channels
- Artnet Support extend to 64 DMX output
- UPS power protector built in
- Page mode play areas
- SACN merger
- Playback program user code
- Midi Show Control
- Touch trackball settings



TT2



FERRITE SERIES



YJ12X350

MALAYSIAN CONE

Power Rating	350W
Norminal Impedence	8 Ohm
Frame	Aluminium
Voice Coil	3" SV
Size / Net Wt.	15" / 7.5 Kg
Magnet Size	190x90x20 Y35
Frequency	50 Hz - 3.5 KHz
Damper	Red Silicon

FERRITE SERIES



YJ12X400

MALAYSIAN CONE

Power Rating	400W
Norminal Impedence	8 Ohm
Frame	Aluminium
Voice Coil	3" In/ Out
Size / Net Wt.	12" / 4.8 Kg
Magnet Size	190x90x25 Y35
Frequency	55 Hz - 3.5 KHz
Damper	Red Silicon

NEO SERIES



YJ12X500

MALAYSIAN CONE

Power Rating	550W
Norminal Impedence	8 Ohm
Frame	Aluminium
Voice Coil	3.5" In/ Out
Size / Net Wt.	12"
Magnet Size	190x90x25 Y35
Frequency	-
Damper	Red Silicon

NEO SERIES



YJ12N76

Power Rating	500W
Norminal Impedence	8 Ohm
Frame	Aluminium
Voice Coil	3" CCAW
Size / Net Wt.	12" / 3.8kg
Magnet Size	25x12x12 N40
Frequency	45 Hz - 2.5 KHz

FERRITE SERIES



YJ12N351

Power Rating	400W
Norminal Impedence	8 Ohm
Frame	Aluminium
Voice Coil	3.5" In/Out
Size / Net Wt.	12" / 4.8 kg
Magnet Size	80x10 N40
Frequency	50Hz - 3.5kHz

FERRITE SERIES



YJ15X400

MALAYSIAN CONE

Power Rating	400W
Norminal Impedence	8 Ohm
Frame	Aluminium
Voice Coil	3" SV
Size / Net Wt.	15" / 9 Kg
Magnet Size	190x90x20 Y35
Frequency	55 Hz - 3.5 KHz
Damper	Red Silicon

FERRITE SERIES



YJ15X351

Power Rating 500W
Norminal Impedence 8 Ohm
Frame Aluminium
Voice Coil 3.5" CCAW
Size / Net Wt. 15" / 11 kg
Magnet Size 200x100x25 Y35
Frequency 45 Hz - 3.0 KHz

FERRITE SERIES



YJ15X500

Power Rating 500W
Norminal Impedence 8 Ohm
Frame Aluminium
Voice Coil 3.5" CCAW
Size / Net Wt. 15" / 11 kg
Magnet Size 200x100x25 Y35
Frequency 45 Hz - 3.0 KHz

NEO SERIES



YJ15X600

MALAYSIAN CONE
Power Rating 600W
Norminal Impedence 8 Ohm
Frame Aluminium
Voice Coil 4" in/out
Size / Net Wt. 15" / 11.4 kg
Magnet Size 220x110x25 Y35
Frequency 35 Hz - 2.0 KHz
Damper Red Silicon

FERRITE SERIES



YJ15X451

Power Rating 1200W
Nominal Impedance 8 Ohms
Frame Aluminium Exl.
Voice Coil 4.5" In/ Out
Size/ Net Wt. 15" / 12.5 Kgs
Magnet Size 250x140x25 Y35
Frequency 35 Hz- 1.5 KHz

NEO SERIES



YJ15N76

Power Rating 600W
Norminal Impedence 8 Ohm
Frame Aluminium
Voice Coil 3" CCAW
Size / Net Wt. 15" / 4kg
Magnet Size 25x12x12 N40
Frequency 35 Hz - 3.5 KHz

NEO SERIES



YJ15N351

Power Rating 800W
Norminal Impedence 8 Ohm
Frame Aluminium
Voice Coil 3.5" In/Out
Size / Net Wt. 15" / 5 kg
Magnet Size 25x12x12 N40
Frequency 40 Hz - 3.5 KHz

FERRITE SERIES



YJEC15400

MALAYSIAN CONE

Power Rating	400W
Nominal Impedance	8 Ohm
Frame	Aluminium
Voice Coil	3" SV
Size/ Net Wt.	15" / 9Kg
Magnet Size	190x90x20 Y35
Frequency	50Hz - 3.5 KHz
Damper	Yellow Silicon

15

FERRITE SERIES



YJEC15600

MALAYSIAN CONE

Power Rating	600W
Norminal Impedence	8 Ohm
Frame	Aluminium
Voice Coil	4" in/out
Size / Net Wt.	15" / 11.4 kg
Magnet Size	220x110x25 Y35
Frequency	35 Hz - 2.0 KHz
Damper	Yellow Silicon

15

FERRITE SERIES



YJ18TBW100

Power Rating	1500W
Norminal Impedence	8 Ohm
Frame	Aluminium
Voice Coil	4" In / Out
Size / Net Wt.	18" / 14 kg
Magnet Size	220x110x30 Y35
Frequency	35 Hz - 2.0 KHz (Double Magnet)

18

NEO SERIES



YJ181500

Power Rating	1200W
Norminal Impedence	8 Ohm
Frame	Aluminium
Voice Coil	4" In/ Out
Size / Net Wt.	18" / 12.5 Kg
Magnet Size	220x110x25 Y35
Frequency	35 Hz - 2.5 KHz
Damper	Red Silicon

18

FERRITE SERIES



YJGPA100

MALAYSIAN CONE

Power Rating	1500W
Norminal Impedence	8 Ohm
Frame	Aluminium
Voice Coil	4" SV 4 Layers
Size / Net Wt.	18" / 15 kg
Magnet Size	220x110x20 Y35
Frequency	36 Hz - 1.8 KHz
Damper	Red Silicon

18

FERRITE SERIES



YJ18GPA1500

MALAYSIAN CONE	
Power Rating	1500W
Norminal Impedence	8 Ohm
Frame	Aluminium
Voice Coil	4" SV 4 Layers
Size / Net Wt.	18" / 15 kg
Magnet Size	220x110x20 Y35 Double Magnet
Frequency	35Hz - 1.8KHz
Damper	Red Silicon

18

FERRITE SERIES



YJ18X451

MALAYSIAN CONE

Power Rating 1500W
Norminal Impedence 8 Ohm
Frame Aluminium
Voice Coil 4.5" In/ Out
Size / Net Wt. 18" / 20 Kg
Magnet Size 253x140x25 Y35
Frequency 35 Hz - 1.0 KHz
Damper Red Silicon

18

FERRITE SERIES



YJ18X1500

MALAYSIAN CONE

Power Rating 1500W
Norminal Impedence 8 Ohm
Frame Aluminium
Voice Coil 4.5" In/ Out
Size / Net Wt. 18" / 12.5 Kg
Magnet Size 220x110x25 Y35
Frequency 35Hz - 2.5 KHz
Damper Red Silicon

18

FERRITE SERIES



YJ18N1500

Power Rating

1500W
Norminal Impedence 8 Ohm
Frame Aluminium
Voice Coil 4.5"
Size / Net Wt.
Magnet Size 110x10 mm
Frequency 35 Hz - 1.5 KHz

18

FERRITE SERIES



YJ18N2000

MALAYSIAN CONE

Power Rating 1999 W
Norminal Impedence 8 Ohm
Frame Aluminium
Voice Coil 5" SV In/Out
Size / Net Wt. 18" / 10 kg
Magnet Size 120x14 N40
Frequency 35 Hz - 2.5 KHz
Damper Red Silicon

18

FERRITE SERIES



YJ1850

MALAYSIAN CONE

Power Rating 2000W
Norminal Impedence 8 Ohm
Frame Aluminium
Voice Coil 5" in/out
Size / Net Wt. 18" / 22 Kg
Magnet Size 280x140x25 Y35
(4 Pcs Magnet)
Frequency 35 Hz - 1.5 KHz
Damper Red Silicon

18

FERRITE SERIES



YJ21FW600

MALAYSIAN CONE

Power Rating 2500 W
Norminal Impedence 8 Ohm
Frame Aluminium
Voice Coil 6" In/ Out Coil
Size / Net Wt. 21"
Magnet Size 330x30 Y35
Frequency 35Hz - 1.5 KHz
Damper Red Silicon

21

FERRITE SERIES



YJY12400

Power Rating 410W
Nominal Impedance 8 Ohms
Frame Aluminium Exl.
Voice Coil 3" In/ Out
Size/ Net Wt. 12"
Magnet Size 190x20MM (Y35)

12

FERRITE SERIES



YJY12351

Power Rating 500W
Nominal Impedance 8 Ohms
Frame Aluminium Exl.
Voice Coil 3.5" In/ Out
Size/ Net Wt. 12"
Magnet Size 190x25MM (Y35)

12

FERRITE SERIES



YJY15400

Power Rating 410W
Nominal Impedance 8 Ohms
Frame Aluminium Exl.
Voice Coil 3" In/ Out
Size/ Net Wt. 15"
Magnet Size 190x20MM (Y35)

15

FERRITE SERIES



YJY15600

Power Rating 650W
Nominal Impedance 8 Ohms
Frame Aluminium Exl.
Voice Coil 3" In/ Out
Size/ Net Wt. 15"
Magnet Size 190x20MM (Y35)

15



YJY18451

Power Rating 1700W
Nominal Impedance 8 Ohms
Frame Aluminium Exl.
Voice Coil 4.5" In/ Out
Size/ Net Wt. 18"
Magnet Size 253x25MM (Y35)

18



YJY1850 CHROME

Power Rating 1990+100W
Nominal Impedance 8 Ohms
Frame Aluminium Exl.
Voice Coil 5" In/ Out
Size/ Net Wt. 18"
Magnet Size 280x25MM (Y35)

18

FERRITE SERIES



ATI ES2 2150

Power Rating 3000W
Nominal Impedance 8 Ohm
Frame GBF
Voice Coil 6" In/Out
Size/ Net wt. 21" / 29.5 Kgs
Magnet Size 330mm / Y35
Frequency 40 Hz - 3 Khz

FERRITE SERIES DRIVERS



YJ-450

Throat 1 inch
Nominal Impedance 8 ohm
Nominal Power Handling 60 watt
Continuous Power Handling 120 watt
Sensitivity(1W/1m) 110 ±2dB
Frequency Range(-10dB max) 1200-20000 Hz
Voice Coil Diameter 1.75 inch
Voice Coil Material CCAW
Former Material Kapton
Diaphragm Material Titanium
Magnet Type Strontium Ferrite
Magnet Sizes 115mm
Cover (or Adaptor) Material Plastic

FERRITE SERIES DRIVERS



YJ-518

Throat 1 inch
Nominal Impedance 8 ohm
Nominal Power Handling 80 watt
Continuous Power Handling 160 watt
Sensitivity(1W/1m) 110 ±2dB
Frequency Range(-10dB max) 1000-18000 Hz
Voice Coil Diameter 2 inch
Voice Coil Material CCAW
Former Material Kapton
Diaphragm Material Titanium
Magnet Type Strontium Ferrite
Magnet Sizes 134mm
Cover (or Adaptor) Material Plastic

FERRITE SERIES DRIVERS



YJ-750R

Throat 2 Inch
Nominal Impedance 8 Ohm
Nominal Power Handling 120 Watt
Continous Power Handling 240 Watt
Sensitivity(1W/1m) 106+/- 2dB
Frequency Range(-10dB max) 700Hz - 18000Hz
Voice Coil Diameter 3 Inch
Voice Coil Material CCAW
Diaphragm Material Kapton
Magnet Type Strontium Ferrite
Magnet Size 170x20 mm
Cover (or Adaptor) Material Aluminium

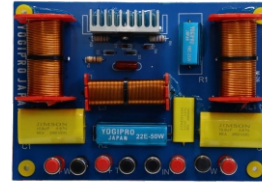
- ▶ Heavy weight
- ▶ 100% thick plates
- ▶ Pure sound
- ▶ No cost cutting to compromise quality
- ▶ Exclusive design

NETWORK PLATES



YJ-425

Application
 2x300 - 500 Watts 15" Speaker
 1x40 - 100 Watts HF



YJ-825

Application
 2x600 - 1000 Watts 15" Speaker
 1x110 - 150 Watts HF

PA AMPLIFIER

PA AMPLIFIERS



EXCLUSIVE MODEL
 NEW LAUNCH

YP-301

ECONOMICAL PRICE

PA AMPLIFIERS



EXCLUSIVE MODEL
 NEW LAUNCH

YP-701

ECONOMICAL PRICE



AUDIOFLIX

Engineered In Germany

FERRITE SERIES



AFX12400

Power Rating 400W
Nominal Impedance 8 Ohm
Frame Cast Aluminium
Voice Coil 3"
Size/ Net wt. 12"/ 6.9 Kgs
Magnet Size 190x90x20/Y35
Frequency 50 Hz - 3.5 KHz

12

FERRITE SERIES



AFX12400 V

Power Rating 400W
Nominal Impedance 8 Ohm
Frame Cast Aluminium
Voice Coil 3"
Size/ Net wt. 12"
Magnet Size Y35
Frequency 50 Hz - 3.5 KHz

12

NEO SERIES



AFX12G301

Power Rating 400W
Nominal Impedance 8 Ohm
Frame Cast Aluminium
Voice Coil 3"
Size/ Net wt. 12"/ 6.9 Kgs
Magnet Size 190x90x20/Y35
Frequency 50 Hz - 3.5 KHz

12

FERRITE SERIES



AFX12600 NEO

Power Rating 600W
Nominal Impedance 8 Ohm
Frame Cast Aluminium
Voice Coil 3"
Size/ Net wt. 12"/ 5.2 Kgs
Magnet Size 25x10x5mm (5Pcs)
Frequency 35 Hz - 1.0 KHz

12

FERRITE SERIES

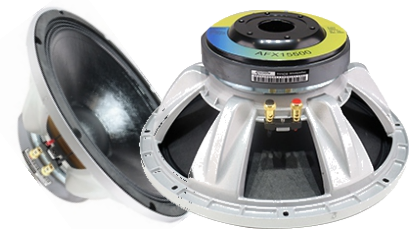


AFX15400

Power Rating 400W
Nominal Impedance 8 Ohm
Frame Cast Aluminium
Voice Coil 3"
Size/ Net wt. 15"/ 6.2 Kgs
Magnet Size 190x90x25/Y35
Frequency 50 Hz - 2.5 KHz

15

FERRITE SERIES



AFX15500

Power Rating 500W
Norminal Impedence 8 Ohm
Frame Aluminium
Voice Coil 3.5" CCAW
Size / Net Wt. 15" / 11 kg
Magnet Size 200x100x25 Y35
Frequency 40 Hz - 2.5 KHz

15



AFX15X401

Power Rating 600W
Nominal Impedance 8 Ohm
Frame Aluminium
Voice Coil 4" In / Out
Size / Net Wt. 15" / 11.4 Kgs
Magnet Size 220x110x25 Y35
Frequency 35Hz - 2.0 Khz



AFX15600

Power Rating 600W
Nominal Impedance 8 Ohm
Frame Cast Aluminium
Voice Coil 4"
Size/ Net wt. 15" / 13.3 Kgs
Magnet Size 220x110x25 Y35
Frequency 40 Hz - 2.0 Khz



AFX15800

Power Rating 800W
Nominal Impedance 8 Ohm
Frame Cast Aluminium
Voice Coil 4"
Size/ Net wt. 15" / 11 Kgs
Magnet Size 220x110x30 Y35
Frequency 45 Hz - 2.5 Khz



AFX15451

Power Rating 1200W
Nominal Impedance 8 Ohm
Frame Cast Aluminium
Voice Coil 4.5"
Size/ Net wt. 15" / 13.5 Kgs
Magnet Size 250x140x30 Y35
Frequency 40 Hz - 2.0 Khz



AFX18451

Power Rating 1500W
Nominal Impedance 8 Ohm
Frame Cast Aluminium
Voice Coil 4.5"
Size/ Net wt. 18" / 14.5 Kgs
Magnet Size 250x140x30 Y35
Frequency 45 Hz - 2.0 Khz



AFX1850PD

Power Rating 2000W
Nominal Impedance 8 Ohm
Frame Cast Aluminium
Voice Coil 5"
Size/ Net wt. 18" / 16.3 Kgs
Magnet Size 280x140x25 Y35
Frequency 50 Hz - 2 Khz

AUDIOFLIX HF

FERRITE SERIES DRIVERS



AFX-450

Throat 1 inch
Nominal Impedance 8 ohm
Nominal Power Handling 60 watt
Continuous Power Handling 120 watt
Sensitivity(1W/1m) 110 ±2dB
Frequency Range(-10dB max) 1200-20000 Hz
Voice Coil Diameter 1.75 inch
Voice Coil Material CCAW
Former Material Kapton
Diaphragm Material Titanium
Magnet Type Strontium Ferrite
Magnet Sizes 115mm
Cover(or Adaptor) Material Plastic

FERRITE SERIES DRIVERS



AFX-518

Throat 1 inch
Nominal Impedance 8 ohm
Nominal Power Handling 80 watt
Continuous Power Handling 160 watt
Sensitivity(1W/1m) 110 ±2dB
Frequency Range(-10dB max) 1000-18000 Hz
Voice Coil Diameter 2 inch
Voice Coil Material CCAW
Former Material Kapton
Diaphragm Material Titanium
Magnet Type Strontium Ferrite
Magnet Sizes 134mm
Cover(or Adaptor) Material Plastic

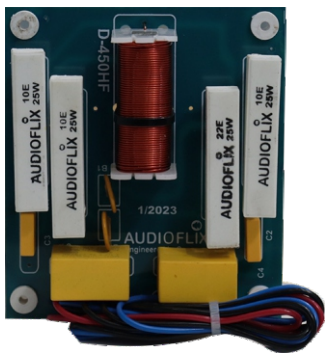
FERRITE SERIES DRIVERS



AFX-750

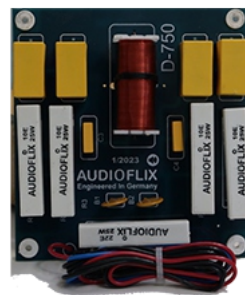
Throat 2 inch
Nominal Impedance 8 ohm
Nominal Power Handling 110 watt
Continuous Power Handling 220 watt
Sensitivity(1W/1m) 106 ±2dB
Frequency Range(-10dB max) 600-16000 Hz
Voice Coil Diameter 3 inch
Voice Coil Material CCAW
Former Material Kapton
Diaphragm Material Titanium
Magnet Type Strontium Ferrite
Magnet Sizes 170mm
Cover(or Adaptor) Material Aluminium

NETWORK PLATES



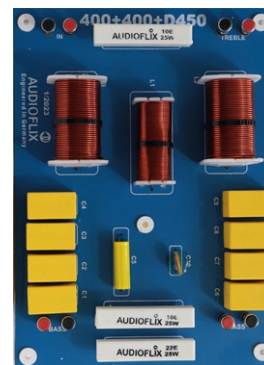
AFX-450

Application
450 HF (60 WATTS)



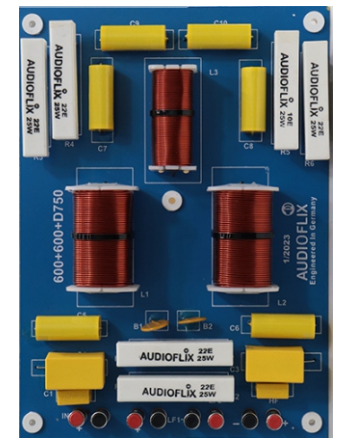
AFX-750

Application
750 HF (110 WATTS)



AFX-425

Application
2x300 - 500 Watts 15" Speaker
1x40 - 100 Watts HF



AFX-825

Application
2x600 - 1000 Watts 15" Speaker
1x110 - 150 Watts HF



 GLABS

FERRITE SERIES



12FW76

RMS POWER- 500 WATT
SENSITIVITY- 97dB
VOICE COIL- 3 INCH
FREQUENCY- 50HZ- 3.5KHZ

12

FERRITE SERIES



MB12X351

RMS POWER- 650 WATT
SENSITIVITY- 97dB
VOICE COIL- 3.5 INCH
WEATHER PROTECT CONE

12

NEO SERIES



GLMB121X351 NEO

RMS POWER- 500 WATT
SENSITIVITY- 97dB
VOICE COIL- 3 INCH
FREQUENCY- 50HZ- 3.5KHZ

12

FERRITE SERIES



GL452

RMS POWER- 1800 WATT
SENSITIVITY- 99dB
VOICE COIL- 4.5 INCH
FREQUENCY- 41HZ- 4KHZ

18

FERRITE SERIES



GLA451 TURBO

RMS POWER- 2200 WATT
SENSITIVITY- 95dB
VOICE COIL- 4.5 INCH
FREQUENCY- 41HZ- 1KHZ

18

FERRITE SERIES



GL1851

RMS POWER- 2300 WATT
SENSITIVITY- 99dB
VOICE COIL- 5.2 INCH
FREQUENCY- 41HZ- 2KHZ

18

FERRITE SERIES



GL21SW152

RMS POWER- 2500 WATT
SENSITIVITY- 97dB
VOICE COIL- 6 INCH
FREQUENCY- 40HZ- 1KHZ

21

AMPLIFIERS

Z4.28 HUNTER



HT4.11 HUNTER



1050H HUNTER



HT4.9 HUNTER



SP650H HUNTER



SP41200H HUNTER



SP850H HUNTER



SP1250H HUNTER



SP4800H HUNTER



Z2.20 HUNTER



SP5000H HUNTER



Z4.15 HUNTER



Z4.20 HUNTER



NOTES



MODEL	DESCRIPTION	QTY.	PRICE	TOTAL



GREAT PEOPLE COME FROM GREAT PLACES

SOME OF OUR ESTEEMED DEALERS GETTING DEALER CERTIFICATE

WE LOVE OUR ATIPRO FAMILY.





GREAT PEOPLE COME FROM GREAT PLACES

SOME OF OUR ESTEEMED DEALERS GETTING DEALER CERTIFICATE

WE LOVE OUR ATIPRO FAMILY.

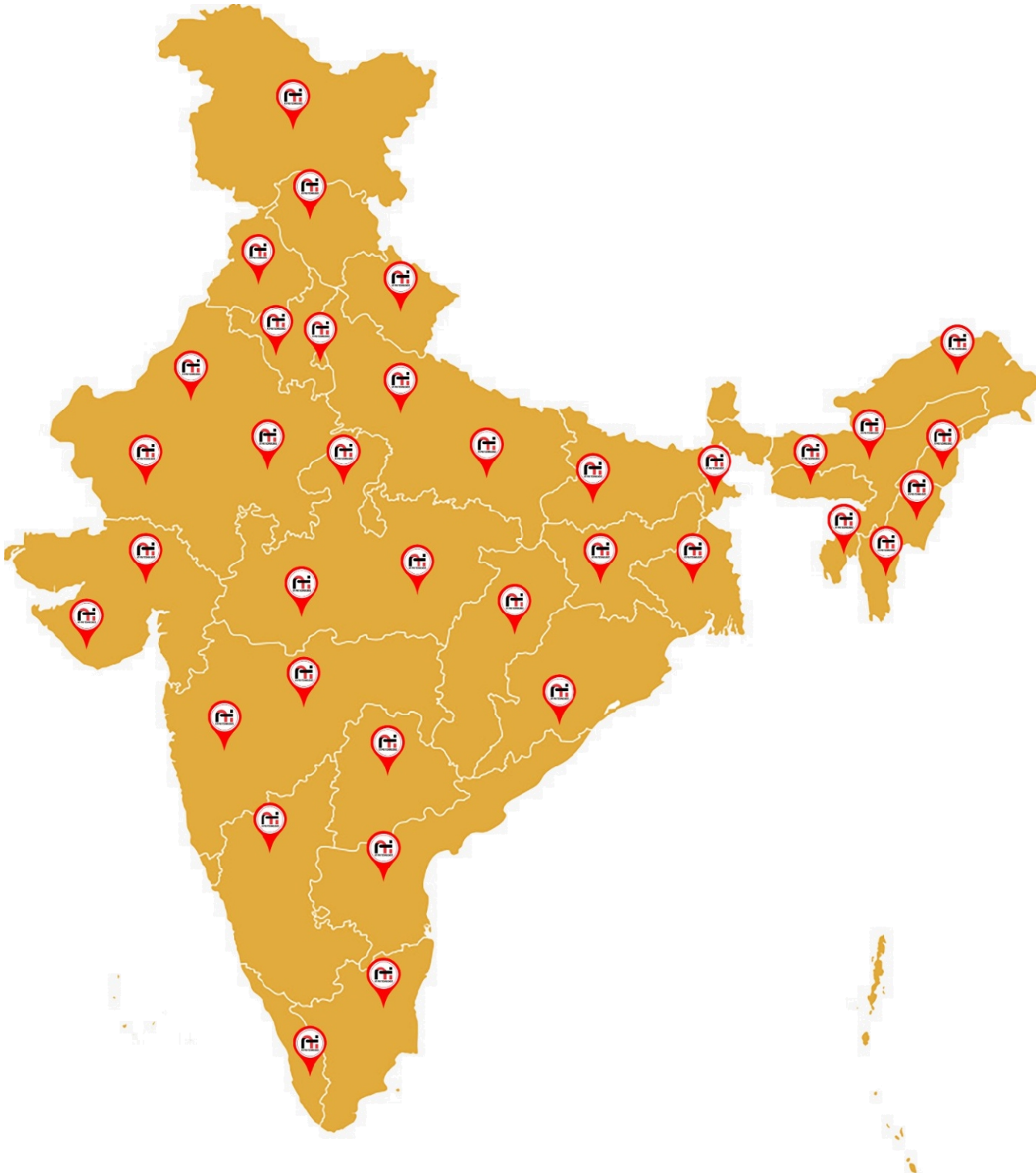


DEALER NETWORK

ATIPro understands that Indian retail industry has become increasingly demanding and hence brands are looking for partners that delivers to all vertical of the trade. To be successful in India companies have no option but to build a distribution network bottom up.

Our Company takes pride in having built a Pan India Distribution Network, in spite of India being such a diversified market place.

Our Dealers Network : Andhra Pradesh, Assam, Bihar, Chhattisgarh, Goa, Gujarat, Haryana, Himachal Pradesh, Jharkhand, Karnataka, Madhya Pradesh, Maharashtra, Punjab, Rajasthan, Tamil Nadu, Telangana, Uttar Pradesh, Uttarakhand.





At ATI Pro Technologies, our experienced team of designers places a high value on technical excellence, product reliability, and consistent electro-acoustical functionality. With over 50 years of inspired and deliberate engineering, we have earned nationwide acclaim, particularly from the Indian sound rental community. Our unwavering commitment to performance and quality control sets us apart.

Specializing in lighting and audio products, ATI Pro Technologies conducts most of its engineering and development work in Italy. Our dedication to quality has established us as the premier choice for state-of-the-art high-end transducers.

In addition to our expertise in professional audio, we excel in pro lighting solutions, ensuring comprehensive support for our clients' diverse needs. We never compromise on product or sound quality, remaining steadfast in our pursuit of perfection. ATI Pro Technologies is renowned for its commitment to excellence, allowing us to maintain our leading position in the audio and lighting industry.

WARNING!

Beware of fake products! There are sub-standard amplifiers, microphones, H.F drivers, speakers, diaphragms, and voice coils, etc being falsely sold as genuine ATI Pro Technologies products.

BE VERY CAREFUL

- Obtain your requirements only from authorized ATI Pro Technologies dealers and distributors.
- Always insist on seeing the Authorized Dealer Certificate and ATI Pro Technologies trademark.
- The manufacture and sale of counterfeit products are illegal and punishable by law.



Dealer